

## Contents

<b>Title</b>	<b>Author</b>	<b>Page</b>
<b>Articles</b>		
Become a Parish Councillor		23
Charity Art Exhibition Coming Soon		22
Could You Foster?		8
Green Energy Planning Proposals and Reach	Nick Acklam	4
How Energy Efficient is Your Home?		9
Sewers in Reach	Claire Halpin-McDonald and Helen Oliver	21
Swaffham Bulbeck Christmas Fair	Lucinda Collison	6
Swaffham Prior Pop Up Art Gallery and Cafe		11
<b>Anglesey Abbey</b>	Meghan Curteis	14
<b>Bottisham and Burwell Photographic Club</b>	Daphne Hanson	10
<b>Burwell Museum and Windmill</b>	Sara Phipps	18
<b>Burwell and Reach Car Scheme</b>	Pam King	6
<b>Bus Timetable</b>		39
<b>Church</b>		
Church Services		20
Letter from the Vicarage	Eleanor Williams	18
Reach Church Development Update	Pat Chalmers	19
<b>Community Cafe</b>	Claire and Helen	6
<b>Contact Information</b>		40
<b>Diary Dates</b>		38
<b>Dyke's End</b>	Dan and Ruth	
<b>Events Team</b>		6
<b>Food Focus</b>	Catherine Gibson	16
<b>Nature in Reach</b>	Cath Tayleur	12
<b>Parish Council</b>		
Know your District Councillors		23
Know Your Parish Council		23
Meeting Minutes		25
<b>Reach Fair</b>	Claire Halpin-McDonald	17
<b>Rosanna's Ramblings</b>	Rosanna Moseley Gore	7
<b>Snakehall Farm</b>		
<b>Sport and Recreation</b>		
Reach Riders	Sue Cameron	8
<b>Tales from a Reach Garden</b>	Danuta Gibson	
<b>Then and Now</b>	Chris Patterson	40
<b>Village Hall</b>		10
<b>Village Update</b>	Alex de Giorgio-Miller	3
<b>Wicken Fen</b>	Julia Hammond	14

---

## From the Editor

---

Well, it's still winter, but as I write this, it's quite warm and the days are getting longer. Soon we'll be into spring and already the bulbs are poking their noses up out of the soil. Let's hope 2023 is a whole lot better than the last couple of years have been.



From Karen Carpenter

*Last month's Getting to Know You feature was the last, thanks go to all the contributors over the years. To take its place, it has been suggested that readers may like to share with the Village their reviews and recommendations for eating out. This could be pubs, restaurants or take-aways. These can be local or anywhere in the country that you may have travelled to. Please forward any such articles to the editor.*

And a big thankyou goes to Karen who has put these articles together over recent times.

Now – one big theme in this issue relates to our Parish Council which should have seven members and is now down to just four. The opportunity is there for villagers to be co-opted onto the Parish Council and if you are interested, I urge you to get in touch with Susan Bailey, please have a look at the article on page 23. It can be a very rewarding experience, especially for newcomers who will get to know all about the village very quickly.

Also, do have a look at page 9 and take advantage of it. Its an initiative from the Parish Council, championed by Matt Newman, whereby a thermal imaging camera has been loaned to the village for the month of February. With it, the energy efficiency of your home can be reviewed and then remedial actions suggested.

**David Parr**



---

## About the Magazine

---

The purpose of *Within Reach* is to serve the whole village by circulating information and interesting articles free to every household. Additional copies are available at a charge of £2.50. Issues are published bi-monthly covering the months of Feb/Mar, Apr/May, June/July, Aug/Sept, Oct/Nov and Dec/Jan.

Copies of *Within Reach* magazine and its predecessor *Out of Reach* can be found on the village website [www.reach-village.co.uk](http://www.reach-village.co.uk). This magazine (which is fully funded from advertising) is printed by Burwell Print Centre, an excellent social enterprise which trains and supports adults with learning disabilities and provides high quality design and print capabilities.

---

## The Team

---

<b>Editor</b>	David Parr
<b>Distribution</b>	Freda Lloyd, Claire Halpin-McDonald and Grahame Radford
<b>Photographer</b>	Rosanna Moseley Gore
<b>24Acres</b>	David Thomas
<b>Anglesey Abbey</b>	Meghan Curteis
<b>Church</b>	Eleanor Williams
<b>Cookery</b>	Catherine Gibson
<b>Cricket</b>	Ross Clark
<b>Events Team</b>	Debbie Quilter
<b>Gardening</b>	Danuta Gibson
<b>Getting to Know You</b>	Karen Carpenter
<b>Neighbourhood Watch</b>	Kevin Evans
<b>Reach Riders Group</b>	Sue Cameron
<b>Rosanna's Ramblings</b>	Rosanna Moseley Gore
<b>Snakehall Farm</b>	Liz Pitt
<b>Then and Now</b>	Chris Patterson
<b>Village Matters</b>	Alex de Giorgio-Miller
<b>Wicken Fen</b>	Julia Hammond
<b>Wildlife</b>	Cath Tayleur

---

## Village Update

---

Happy New Year!

After the manic rush that is the run up to Christmas with two young children, we had a lovely relaxing Christmas break catching up with family and friends and felt quite refreshed at the end of it. Now a couple of weeks back into term and we're right back on it!



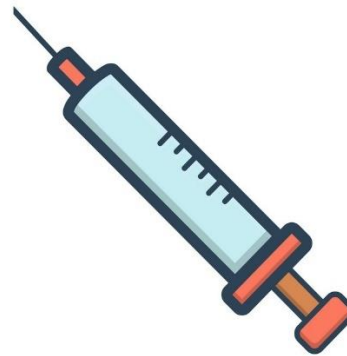
### Warm Hubs

Warm Hubs is a collaborative initiative designed to support residents across East and South Cambridgeshire this winter. Run within existing community spaces, local residents can visit a safe, warm and friendly environment to enjoy refreshments and social activity, obtain information and advice and share the company of others. The network of Warm Hubs is truly community-led; coordinated and hosted by trained volunteers within the heart of local communities. Our nearest Warm Hub is at Burwell Day Centre, opening Mondays-Fridays from 9am to 3pm.

### Cost of Living

The rising cost of living is having an impact on everyone and East Cambs District Council has measures in place to support residents who may feel they are struggling to cope. There are many forms of help available to residents, from benefits and grants, through to discounts, food vouchers and help with managing debt and staying healthy. The new 'Cost of Living' pages on their website <https://www.eastcambs.gov.uk/cost-living/cost-living> have suggestions and ideas on where to get help this winter. They include advice on government payments, charities and support schemes, support with energy costs, help with food costs, information on community groups, advice on staying healthy and debt and money advice.

### Flu and Covid vaccines



There seems to have been a lot of flu around this year, we know lots of people who have been laid up in bed for days and taken weeks to get back to full strength. Although the flu vaccine is best taken early winter before the flu season starts, it is still available anytime, along with the Covid booster - information from the NHS below: The flu vaccine is given free on the NHS to adults who: are 50 and over (including those who will be 50 by 31 March 2023); have certain health conditions; are pregnant; are in long-stay residential care; receive a carer's allowance, or are the main carer for an older or disabled person who may be at risk if you get sick.

Also, if you live with someone who is more likely to get a severe infection due to a weakened immune system, such as someone living with HIV, someone who has had a transplant, or is having certain treatments for cancer, lupus or rheumatoid arthritis.

If you're eligible for the free flu vaccine, it's likely you can get the coronavirus (COVID-19) seasonal booster. Getting both vaccines is important because more people are likely to get flu this winter and you're more likely to be seriously ill if you get flu and COVID-19 at the same time. It's safe to have both vaccines at the same time, but you need to book them separately. If you're eligible for either vaccine, you do not need to wait to be contacted to get vaccinated. If you're eligible for a free flu vaccine, you can book an appointment at your GP surgery. You can also book online to get a flu vaccine from a pharmacy that offers it on the NHS.

Keep well, keep safe and wrap up warm!

Alex de Giorgio-Miller



## Rowan's charity art exhibition

**'TOGETHER'** 18-19 February, 10am-3pm  
*The Leys School, Cambridge, CB2 7AD*

**Exhibition | Pop-up shop | Silent auction | Free entry**  
*All funds raised will support adults with learning disabilities*

**fundraising@rowanhumberstone.co.uk** or call **01223 566027**  
**www.rowanhumberstone.co.uk** Registered Charity No. 1099555

---

## Green Energy Planning Proposals and Reach

---

I am pleased to report that Sunnica has deleted the option of installing a substation on Burwell Fen from its Solar Farm application (see 'Within Reach' October/November 2022). This removes the prospect of a large compound of transformers and other industrial kit being built on farmland a mile outside the village.

Reach Parish Council had objected to this option. Whilst I am sure this was noted by the developer, the cost and delay of compulsorily purchasing land for the substation was undoubtedly the main factor behind Sunnica's change. The Parish Council continues to monitor the remainder of Sunnica's application, being unconvinced of its claimed green credentials and concerned about the environmental and public health risks arising from the battery energy storage system that forms a key part of Sunnica's proposal.

Although Sunnica's proposed substation is no more, the character of Burwell Fen remains under threat from a series of other energy schemes, some, but not all of which, are green. Few people would, of course, object to the principle of green or low carbon energy generation but, in the case of Burwell Fen, the cumulative impact of such developments has not, in my view, received sufficient consideration from the planners. Burwell Fen is struggling to accommodate what has already been approved and further approval of an application that is currently under consideration and potentially others rumoured to be in the pipeline, could destroy the open, big sky character and spirit of Burwell Fen.

Three such developments covering over 150 hectares (the equivalent of 210 football pitches) have been built or are being constructed on or adjacent to Burwell Fen. Those of you who walk the banks of Reach Lode will have seen the building of the EDF's 80 hectare solar farm on Hightown Drove. (I should mention that EDF has set up a Community Fund in acknowledgement of the impact of its development. Reach and Burwell Parish Councils are currently in discussion with EDF about the distribution of this funding. It remains to be seen if the funding compensates for the loss of visual amenity).

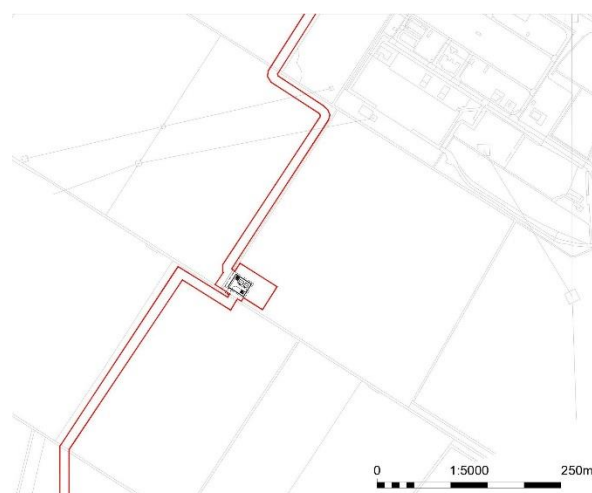
A further energy development (a battery energy storage facility on Weirs Drove) has approval but has yet to be built and a proposal for a further substation on Hightown Drove is currently under consideration (see below). The ECDC planning references are 15/00723/ESF, 17/02205/FUL, 20/00557/ESF 21/00816 and 22/01154/CCA).

National Grid has also undertaken construction work within the footprint of the existing Weirs Drove substation to accommodate this burgeoning energy activity.

A coherent and comprehensive overview of the impact on the landscape has been hampered by the fact that three planning bodies are involved in deciding on the appropriateness of the schemes (East Cambridgeshire District Council (ECDC), Cambridgeshire County Council (CCC) and the Planning Inspectorate). Furthermore, development by National Grid within the Weirs Drove substation is exempt from any community scrutiny or overview under permitted development rights.

Some may say that the landscape of Burwell Fen is already damaged by the existing Weirs Drove substation and that further visual intrusion is inevitable and acceptable in the interests of increasing green energy generation within the UK. However, I am not sure the majority of Reach residents see it this way. In the residents' survey of 2020, 93 per cent of respondents valued the open fenland that surrounds the village. More generally, the great majority of respondents expressed a love of the tranquility and openness of our neighbourhood. Some residents said that they moved to Reach expressly to enjoy access to the open fenland around the village. The developments on Burwell Fen degrade the amenity and recreational value of a sizeable portion of our near surroundings, especially as the developments are highly visible from recreational and vehicle routes (the banks of Reach Lode, from the Devil's Dyke and the road to Burwell and Newmarket) that people use daily.

It was with the above views in mind that Reach PC recently registered concerns about a current CCC proposal to build an electrical substation and switchgear buildings with associated compound and parking on Hightown Drove, Burwell (its reference is CCC/22/083/FUL. ECDC's reference is 22/01154/CCA. A plan of the scheme is below).



*Location View*

This proposal would be visually intrusive across much of Burwell Fen.



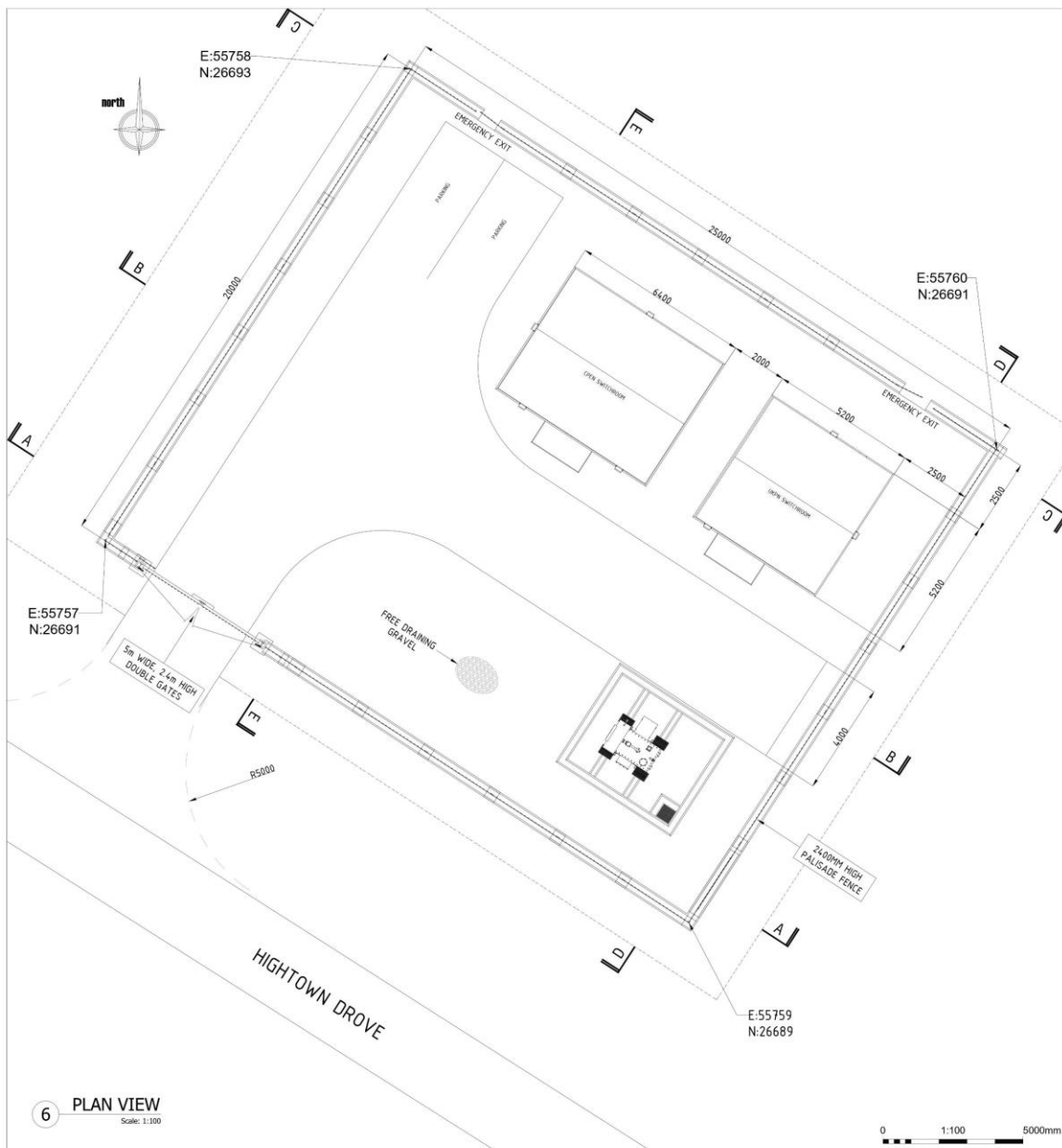
Vegetative screening of this substation would take many years to establish and would always be ineffective from the elevated footpaths of Reach and Burwell lode banks. Furthermore, as Burwell Fen is largely free of trees and hedges, vegetative screening would be substituting one form of visual intrusion for another.

Although it falls just outside the parish boundary, the PC expressed concern that public consultation on this development, seemingly so key to the successful operation of the North Angle solar farm at Soham and the Swaffham Prior district energy scheme, was only now being sought. The PC was also concerned by sentiments expressed in the application. In particular it noted a statement in support of the application by one of CCC's consultants:

*'the open nature of the surrounding farmland is due to change in the near future by the development of a large solar farm to the north east. In this context the proposal is visually consistent with the surrounding landscape'.*

This strongly suggested an unquestioning acceptance of fundamental change in the character of Burwell Fen. To date local residents have not been asked if they find this acceptable.

The PC has asked Cambridgeshire County Council and ECDC to find an alternative, less visually intrusive location for the substation. It is awaiting a substantive response. The PC would, I am sure be interested in villagers' views on this development activity.



**Nick Acklam**  
acklam@reach-village.co.uk

---

## Events Team

---

December was a busy month for the Events Team, but it was fun as ever. It started on December 1<sup>st</sup> when the first of our Advent Windows went on display, followed daily by another 24. The display always brightens up the village and this year, even the phone box got in on the act.



The tree lights were switched on on the 4<sup>th</sup> of December, with the customary mulled wine and mince pies.

Then on the 14<sup>th</sup> the Seniors Christmas Lunch again took place as you will see from the picture on the inside front cover. Huge thanks go to all those who made it happen, especially our food providers, Catherine, Claire, Glynis and Ian.

And then on Christmas Eve, we gathered around the tree to sing carols, enjoyed mulled wine and mince pies again, before heading over to the Dyke's End. Again, a big thankyou to Grahame Radford who stepped in at the last minute to be "master of ceremonies".

The Events Team will be running similar events in 2023 that it did in 2022, but with the very special addition of the Coronation weekend of 6<sup>th</sup> to 8<sup>th</sup> of May.

**The Coronation** takes place on Saturday 6<sup>th</sup> May to be followed on **Sunday the 7<sup>th</sup> of May** by "**The Coronation Big Lunch**". This is when communities across the land are invited to share food and fun together in a nationwide act of celebration and friendship.

**In Reach, we will be having a Garden Party, with food and music throughout the Sunday afternoon from 2.00pm until early evening.** So please, put that date in your diaries and cakemakers, we'd be very grateful for your contributions, as ever. It will be fun!

**David, Debbie, Hannah and Jo**

---

## Swaffham Bulbeck Christmas Fair

---

Thank you very much to all of you who came to the Swaffham Bulbeck Christmas Fair. It makes such a difference when those in surrounding villages support other village events. I'm delighted to say that we raised a total of £2,102.45.

It was a lovely event, with food, gifts, plants, decorations and art for sale and complimentary mulled wine and mince pies. For the first time we charged a £1 entrance fee and were able to see that 125 adults came to the event, children being free of charge.

All proceeds from the Christmas Fair go to charity. The amount raised means we are able to continue supporting our projects in Mara: sponsoring a student at Bunda Girls School and sending funds to support the vital work of the Safe House, which gives refuge to girls in danger of FGM. St. Mary's Church benefited too, as the cost of keeping this ancient church safe and in good repair for future generations is considerable.

This year's Swaffham Bulbeck Christmas Fair will be on Saturday 2 December 2023, 10am-12 noon.

**Lucinda Collison**

---

## Burwell and Reach Car Scheme

---

The Burwell and Reach Car Scheme offers those with travel restrictions or mobility issues a drive to the doctor, dentist, hospital, optician, hairdresser, shopping or just a visit to a friend, at a cost of 30p per mile. Just leave a message on 07399 154913 with your requirements and someone will get back to you. Or contact Pam King in Reach on 07484 852889.

If anyone in Reach would like to volunteer to drive we are always grateful for extra people. Just leave a message on the answerphone 07399 154913. DBS certificates are required but easy to obtain through the scheme.

---

## Community Cafe

---

The café continues to be well supported. Textile sessions (mostly sewing in its multi various forms - and knitting) now partially overlap with the café and the input of new personnel has created an extra buzz.

**Helen and Claire**



---

## Rosanna's Ramblings

---

Just before sitting down to write these ramblings, I was listening to a phone-in on the radio. To say it gave a woeful impression of a country mired in crisis would be an understatement. The big – and they really are huge – problems facing all of us, at the receiving end of needs, and the coalface of providing for those needs and in the dizzy heights of government, are so complicated and multi-faceted that it's hard for anyone to come up with glib solutions. Whatever version of the set of explanations leading up to the crisis we are in – pandemic, Ukraine war, union unreasonableness or governmental intransigency - the one thing we can probably all agree on is that we are well and truly STUCK.



And stuckness is a pain. In Chinese Medicine, stuckness – or stagnation – can literally be seen as one of the big causes of pain. Finding ways to move through stagnation usually leaves us feeling better because we are more free, more flexible. But if there's a combination of extremely aggravated factors causing the stuckness and exhausted weakness in the face of moving through it all, that's what leaves countries, institutions and individuals feeling frustrated, helpless and hopeless.

Now, I do enjoy a well-chosen analogy and in casting my mind over possible themes for this piece, the one that has been hammering most insistently inside my head has been the state of the droves around the village. Yes, I know I have a tendency to mention them at some point during the winter months. But that's fair enough – the unrelenting muddiness, squelchiness, slipperiness and sometimes impenetrableness (sorry) really are a genuine cause for feeling frustrated, helpless and hopeless.



Villagers without dogs needing and demanding twice daily walks are, fortunately for them, at complete liberty to spend the darker months in blissful ignorance of these challenges. Just wait until the circumference of Reach is swathed in blossom and bright green spring leaves, the paths nicely drying out and only then venture out on a walk by choice. But the dogs don't care how muddy they get. Well some breeds do, I know, but not our Milo – his motto could well be "Bring It On – All of It!"

So Charles and I are very uncomfortably aware, most days, of just how awful the droves are at the moment, if attempting to walk at a reasonably brisk pace and keep up with the over-excited dog. Sometimes the mud is so claggy that we gather great clods of it on our boots and forward progress becomes even more encumbered. At least we know that an inelegant slip, slide and fall is likely to have a soft, if filthy, landing.



But let me not beat around the bush any further. Because there is an issue – a Big Issue – that makes all this inconvenience much, much worse. Please excuse me if you, dear reader, are acquainted closely with one of the not-very-gentlefolk making things worse. I'm talking about the Off Roaders. Last weekend, after some very wet weather, we were in the garden trying to avoid churning up a squelchy corner of lawn with too many footsteps and our peace was disturbed by the sound, and then sight, of a huge off-road vehicle coming back down the drove at the bottom of our dock and crossing the bridge to come past the side of our house. Then another. And another. And another. Five in all, I think – all with windows open (presumably in order to feel more viscerally the recently accomplished titanic clash between Vehicle and Earth).

They roared away down towards the Very Bumpy Indeed Fen Road, leaving us wondering if they were going to finish off their afternoon's excitement with a road race. We were feeling a mixture of disbelief, horror, contempt and rage. And we knew that that was probably exactly the reaction that would have given these young men (as that is who they were) most satisfaction.

Now, you could turn round and accuse me of being a grumpy old stick-in-the-mud, meanly wanting to spoil people's fun. As long as their vehicles are legally road-worthy, they are at liberty to explore any green lane they want to (as long as they don't damage said lane – and they would undoubtedly claim that churning up mud can't be claimed to be damage). But back in one of the wintry lockdowns, we had a nasty experience on this same drove, walking back with great difficulty towards the village just before the kink at what I call "Charles's oak tree" by the gate into the meadow, or pocket park. As I say, navigating a safe route through the deep and sticky ruts was very tricky and we became aware of two big vehicles approaching us from behind.

They clearly expected us to move out of the way so that they could get past us. I did, but Charles continued cautiously ahead until the driver in front managed to push his way forward and pulled up level with what to him must have seemed like a stupid old man. He was extremely rude, told Charles to get out of his way and when my not-easily-pushed-over husband remonstrated with him he was shouted at and told it was their right to be there. They spun their giant wheels in the mud next to us and triumphantly ploughed their way past, presumably feeling outraged at our unreasonableness. We were outraged at their aggressive rudeness. I was outraged that anyone should so treat my darling, who was simply walking a drove he has walked for sixty years.

It was actually shocking.

That episode came back to me forcefully when those five drivers roared away from the village. And I found myself feeling so impotent, in the face of their selfishness. And so distressed, actually, that at a time of apparent austerity – certainly a time when many, many people have been struggling to keep their homes warm this winter and when it has cost so much money to put fuel into our tanks to get us to work, to see family, to visit friends, to pick up our shopping ... to see such arrogant conspicuous consumption of diesel ... to see such contempt for anyone else ... to weep for our dear muddy earth so utterly beleaguered by the actions of humanity.

Well, I decided to use this column to do something I almost never do. To express my personal views in public. So there it is.

**Rosanna Moseley Gore**



**CentrePeace**

**Tuesday 10 - 12.30**  
**Wednesday 2 - 4**  
**Thursday 10 - 12.30**  
**Friday 10 - 12.30**  
**Saturday 10 - 12.30**

*CentrePeace is run by volunteers and supported by our churches. Opening times may be extended as more volunteers feel able to come forward.*

*If you wish to volunteer, please get in touch with Hazel Williams (743897), even if you have worked in the shop in the past.*

---

## Reach Riders

---



Our arena continues to be well used and lessons on a Saturday continue, though things may slow up a bit now during the winter months.

Thanks go to Sadie, Helen and Liz for repainting and treating the jumps which will now stand up to winters worst!

Membership continues to grow and we have had several brand new members join - so welcome to you and enjoy the facilities.

**Sue Cameron**

# could you foster?



**we urgently need foster carers in your area**





We can help you to provide a young person with a stable, secure home.

Call us on **0800 389 0143**  
Visit us at [www.nexusfostering.co.uk](http://www.nexusfostering.co.uk)



# HOW ENERGY EFFICIENT IS YOUR HOME?

Reach Parish Council has borrowed a thermal imaging camera from East Cambs District Council. The camera can help residents to understand where heat is escaping in their homes.

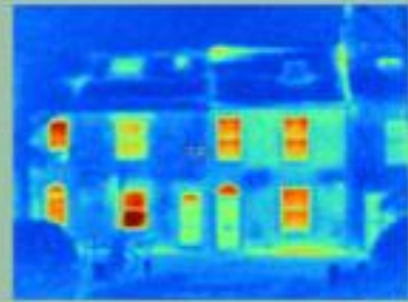
These cameras are a great way to explore where best to target home energy efficiency measures.

It works by producing a heat map of a property which highlights where there are draughts, poor insulation, heating system problems or other reasons for wasted heat from homes.

Throughout February 2023 volunteers from Reach Parish Council are able to visit interested householders and use the camera to create an energy efficiency snapshot.

Residents can then use the results to look at measures to address any issues, potentially helping to improve comfort, cut energy bills and reduce carbon emissions.

If you are a resident of Reach and would like to take part in this initiative please contact [clerk@reachparishcouncil.org](mailto:clerk@reachparishcouncil.org) to express interest in a visit.



---

## Village Hall

---



Have you booked your tickets for the Wine Evening Saturday 25 February at 7.30 at the VH, tickets are going fast so please book yours at [rvhcb25@gmail.com](mailto:rvhcb25@gmail.com) and hope you'll join us for an evening of hilarity and a lot of slurping! Tickets are £15 per person and includes drinks, bread and cheese. Thanks go to Katherine Cane for her clever poster design.

On other news, we submitted the planning application through the Clerk of Reach Parish Council to ECAMBS for permissions to install solar panels on the VH roof, the first step of a very long journey to reduce our dependency on oil for the cost of heating the Hall, planning permissions are needed to present a case for future grants which will ultimately ensure that the VH has a future and with your help and support we can make this happen but we really need more ideas and new blood on our small committee, please would you consider joining us? It's worth saying again that the The Hall would not be here without the efforts of many people who over the years have given their time and energy to keep the Hall going!

### **Sue Elliott Hon Sec**

Reach Village Hall Committee 742268



---

## Bottisham and Burwell Photographic Club

---



### **NEW MEETING VENUE!!**

We resumed our meetings after the Christmas and New Year holidays on 10<sup>th</sup> January at our new venue, Swaffham Prior Village Hall. The evening consisted of two competitions, Panel Pics and Creative Board. Each member entered up to 3 panels, comprising of 5 digital images forming a cohesive panel on a theme of their choice. For the Creative Board each member entered up to 3 boards, each board consisting of more than one print on a chosen theme which must be creative. There was a large entry for both competitions judged by Mrs Sarah Kelman from Cambridge.

On the 17<sup>th</sup> January we were treated to a zoom presentation by Gerald Chamberlain from Carlisle entitled "My Favourite Black & Whites". Gerald showed us a varied selection of his work including a Photoshop demonstration on how to enhance your black and white and infrared photographs.

We are looking forward to a Photography Workshop led by our member Elliot Needham, a talk on Africa by local photographer Laura Galbraith and a Members' Mini's Evening "Life Before PDIs".

Our meetings continue on Tuesday evenings at our new venue from 7.30 pm to 9.30 pm, with the third Tuesday in every month a zoom presentation. New members are always welcome as well as Visitors who can attend for a small entrance fee of £3.00 per meeting, which includes refreshments. Annual subscriptions are £45.00 for Adults, £21.00 for Students, plus a weekly fee of 50p, which includes refreshments.

If you are interested and would like to join us, please contact our Secretary, Debra Bennett, for further information. Tele: 07722 388770, Email: [secretary.bandbpc@gmail.com](mailto:secretary.bandbpc@gmail.com) or visit our website [www.bottburpc.org](http://www.bottburpc.org) where you will find our club programme and a gallery showing a selection of our members' work.

I look forward to meeting you.

**Daphne Hanson DPAGB HonPAGB**



# Swaffham Prior

## *Pop up art gallery and café*

*Ten artists living in Cambridgeshire have gathered their work together to help you find some unique and wonderful Mothers Day gifts, along with delicious home made cakes.*



*Oil and watercolour paintings • Textile art • Prints  
Ceramics • Sculptures • Jewellery • Crafts  
Wide range of desirable gift ideas*

*Saturday 11th & Sunday 12th March  
10:30 - 16:00*

*Swaffham Prior Village Hall*

*High Street, Swaffham Prior, CB25 0LD / 07778 666 187*

*Look out for us on 15/16<sup>th</sup> July, 22/23<sup>rd</sup> July and 25/26<sup>th</sup> November 2023*



---

## Nature in Reach

---

Give me a cold icy winter over warm and muddy any day. We've had some beautiful chilly mornings this year with spectacular frost on frosts. The Woodland Trust tells me that a 'Hoar frost is a type of feathery frost, the word comes from old English and refers to the old age appearance of the frost: the way the ice crystals form makes it look like white hair or a beard.'



Out on the fen the delicate reed fronds looked beautiful coated in ice crystals especially reflecting the sunrise. Whilst the cool weather can make some animals easier to spot and I enjoyed seeing a big fox sitting in the fields between Reach and Burwell.

Jumping in icy puddles is also a great incentive for our girls and it's much easier to get them out for a walk in this weather. We love skimming stones and the satisfying sound made by a chunk of ice skittering across the frozen lode. The cold weather brought lots of birds into our garden. During the first cold snap the blackbirds polished off all of our windfall apples, a good reason not to clear them away and more recently lots of greenfinch, tits, sparrows and starlings have been queuing up for our feeder.

Yet despite the cold snaps, nature marches on. The snowdrops are out and daffodils are pushing their green shoots through the frozen ground. Great tit calls echo across our garden and I've even seen the bluetits prospecting the best box. As the days get slowly longer I'm looking forward to the march of Spring as the countryside wakes up again.

WILDLIFE SIGHTINGS Nov, Dec, Jan Joss Goodchild

I've noticed a definite increase in the numbers of Jackdaws, magpies, crows and jays in and around our garden/Great Lane. I fear the effect these nest and fledgling robbers will have on the songbird population later in the year.

25 Nov '22: Penny wrote that Ron had seen a few migratory fieldfares flying over their garden and on the 24th there were 6 feeding on the fallen apples under the tree calling 'chuck, chuck, chuck' as they flew away.



*Fieldfare*

11 Dec: Unusual sight of a kestrel on our peanut feeder, driven there by the prolonged sub-zero temperatures/food shortages. We buy safe, healthy peanuts, it is worth noting:

'Peanuts are prone to contamination with aflatoxin. This is a powerful liver toxin which can be extremely hazardous for wild birds and squirrels. You should only invest in premium peanuts and then store them in a cool dry place to prevent the mould growth which can lead to contamination.'

13 Dec: Spotted 4 grey partridge in the furrow of a nearby fen field, an increasingly rare sight. I read they have the distinction of laying more eggs than any other British bird.

14 Dec: Saw a woodcock on the Burwell Road near Armtrac, uncommon sighting, continued harsh weather affecting wildlife?

Snow tracks in Reach Wood: pheasant, muntjac, rabbit, fox, badger.

19 Dec: Welcome sight of 2 kestrels, our field, Great Lane.

20 Dec: Grey squirrel on garden peanut feeder.

28 Dec: Rabbits on the fringes of Reach Wood.

12 Jan 2023: Herds of roe deer visible in outlying fields, counted 21 near Burwell Road.

14 Jan: Great spotted woodpecker on our garden peanut feeder, same 20th Jan. Our everyday garden birds today: blue and great tits, house sparrows, dunnocks, collared doves, woodpigeon, starlings, jackdaws, jays, solitary chaffinch, robins, wrens, blackbirds.

14 Jan: A buzzard above Great Lane, nearby birds took to the air.

Hilary: 16 Jan: Lesser spotted woodpecker hanging upside down on my empty nut feeder. 18 Jan: Counted 10 robins in the morning around my seed feeder at the yard. 20 Jan Hilary: 'Large fox crossing the road on Little Fen Drove, evening. 21 Jan: Buzzard and magpie perched happily next to each other on Aves' feed clamp straw bales.

16 Jan: Great Lane field counted 13 redwings. Flocks of bluettits in the hedge beside Aves' farm. Pied wagtails on track.

19 Jan: 6 wrens, kestrel, 24 Acres.

20 Jan: A jay in the garden. Evening - tawny owl hoots, a barking fox and sounds of geese from the direction of Springhall Farm.

22 Jan: Penny and Ron noted pheasants in the garden but mentioned their wildlife sightings were sparse, very few goldfinch and greenfinch seen during the last few months despite daily replenished bird feeders. They know a sparrowhawk visits so they assume this is the reason.

Nick Acklam's Sightings.

28 November. A large flock of Lapwing, numbering close to 100 birds, circulates acrobatically over Burwell Fen. It is an impressive and enjoyable sight. There is a similar event on 9 January, but I am unsure whether the scale of both displays gives grounds for optimism about the future of this bird which is reportedly in long term decline.



*Lapwing*

5 December. Redwing cluster noisily in the large hedge flanking Straight Drove as the wind bites in from the North.

6 December. A hard frost overnight. Redwing and Fieldfare circulate, seemingly aimlessly, in the thorn hedges on either side of Little Fen Drove.

Claire spots 20 or so Whooper Swans on winter wheat fields to the North of Split Drove. A further ten birds fly in to join them.

8 December. The temperature in the village has not risen above freezing for several days and the frost has hardened overnight under clear skies. On an early morning walk on the east bank of Reach Lode, the sun rises behind us to compete with a large, pinkish yellow moon ahead. As we approach the cycle bridge we can hear (but not see) Whooper Swans in conversation on Burwell Mere. Five swans eventually take to the air to make a short, low-level hop to the winter wheat fields on the other side of the Lode.

10 December. The cold snap continues. A solitary male Snow Bunting moves along the verge of Split Drove for some distance without taking flight. An exciting sight as I have only previously seen Snow Bunting on the Suffolk coast. Ten Whooper Swans fly in to feed on the winter wheat. Claire sees a similar number in the same place the following day.

12 December. There has been a small fall of snow overnight. Eight Whoopers are present on the wheat field to the south of Split Drove, their creamier plumage is just visible against the frost and snow.

14 December. Although freezing conditions prevail, our bird feeders remain full and largely unvisited. I assume that birds are being deterred by a Sparrowhawk which we occasionally spot patrolling our garden.

16 December. The ice on our pond is an inch and a half thick. Burwell Fen is covered in thick hoar frost which glows pink in the early morning light.

18 December. A brisk southerly wind suddenly stirs the calm of our morning walk. Although not mild, it spells the end of old-school winter weather that has lasted for almost a fortnight.

29 December. Jupiter is an incredibly bright presence in the early evening sky.

Throughout January. Whooper Swans are an occasional presence on the winter wheat fields either side of Split Drove. They number no more than a handful in contrast to the 100+ birds that were a regular feature last winter. Groups of Roe Deer are very visible on the open fields. The local population appears to be increasing year on year.

17 January. A flock of about 20 Yellowhammer move at low level along the verges of Little Fen Drove. The morning sun flecks the yellow of the male birds' heads. There are 30 or so Wigeon resting on Tubney Mere. Their whistling conversation can be heard from some distance away.

**Cath Tayleur**

---

## Wicken Fen

---



World Wetlands Day is on 2 February, when we always celebrate with a guided walk to look for wetland wildlife around the reserve. Wicken Fen is one of Europe's most important wetlands, supporting over 9,000 species, including plants, birds and invertebrates. 35% of the world's wetlands have disappeared in the last 50 years, so we're working hard to look after this special place. It is not only special as a wetland because of its biodiversity, but also for its ability to capture carbon. Our work as part of the Fens East Peat Partnership will help secure the peat that is so vital for nature, carbon capture, and mitigating the effects of climate change.

### Mucky Pups

Mucky Pups is back after the Christmas break. Parents and carers of pre-school children are invited to join us for outdoor adventures and nature exploration at the Fen. Pre-booking is advised for these sessions as spaces are limited. Sessions are monthly – the next 3 dates are: 24 February, 24 March, 28 April, 10:30am to 12pm. See our website for more details and to book.

### February half term fun

There's lots of things at Wicken Fen to keep families busy over half term. From 10 February follow our **'Birds at Work!' trail** on the Boardwalk to find out which birds are working on which nature 'jobs', before collecting your prize - a kit to make a bird feeder at home! £2 per trail, normal admission applies (free for NT members).

Children aged 6+ can book for a **Bird Collage workshop** on 14 February – it should be a real tweet for creative people! Learn how to use marbling and collage techniques to create a fantastic owl picture to take home. All materials provided. 10.30 – 12.00 or 13.00 – 14.30. £6 per child, must be accompanied (accompanying adults free).

**Birdmania** will arrive on 17 February, in the form of indoor craft for families with children aged 4+. No need to book in advance, just drop in anytime between 11.30 and 3pm to enjoy a selection of fun, bird-themed crafts. £3 per child, must be accompanied (accompanying adults free).

For the latest reserve information, please visit our website [www.nationaltrust.org.uk/wicken-fen](http://www.nationaltrust.org.uk/wicken-fen)  
Details of our events can be found on our website at <https://www.nationaltrust.org.uk/wicken-fen-nature-reserve/whats-on>

Julia Hammond

---

## Anglesey Abbey

---



In February, the Winter Garden will be looking its best, highlighting the star of the season: snowdrops. Daily pre-bookable snowdrop tours will get visitors up close to the specialist collection, exclusive ranges of snowdrop gifts and ceramic art available in the Shop, as well as snowdrop bulbs propagated and grown at Anglesey Abbey will be for sale in the Plant Centre. But that's not all there is to see and do across the property. Chilly days make for perfect walking weather to head further out into the estate with a hot drink from Redwoods and spot the first sings of spring. In March, join a specialist daffodil tour to find out more about the unique varieties of narcissus that can be found in the garden. With over 40 varieties to spot across the estate, the tours will uncover the subtle differences between them and a little bit about the history behind them.

The House re-opens on February 1<sup>st</sup> following the annual clean of the collection. This year the property will be celebrating 'The Magic of Books' and we'll be drawing inspiration from this theme and featuring books from the collection across the year. Our first celebration of books will be World Books Day. Join us on 4<sup>th</sup> and 5<sup>th</sup> March for story times, story writing and dressing up. Bring all the family and dress up as your favourite character to join in the fun.

For the latest information and news of what's going on at the property check out our website and social media pages. [nationaltrust.org.uk/Anglesey-abbey-gardens-and-lode-mill](http://nationaltrust.org.uk/Anglesey-abbey-gardens-and-lode-mill).

**Meghan Curteis**  
**Programming and Partnerships Officer**  
Anglesey Abbey, Gardens & Lode Mill  
Quy Road, Lode, Cambridgeshire, CB25 9EJ

---



GIVE THEM THE GIFT OF THE QUY MILL

# step into A QUY MILL Spring...

Afternoon Tea

Sunday Lunch

V.I.P. (Valentine's Indulge Package)

Overnight Stays

Spa two-night Indulge Package



Our quintessentially English treats include a selection of handmade cakes and pastries, delicious sandwiches and homemade scones with clotted cream and jam – all served with a pot of tea or coffee.



Sit back, relax and enjoy a Quay traditional Sunday lunch of locally sourced seasonal fayre. Served in our award winning 2 star Rosette, The Waterwheel restaurant.



Includes prosecco & chocolates in the room, rose petals on the bed, cooked breakfast, 4 course dinner for 2 with a glass of wine/bubbly/beer, aromatherapy bath for 2 or 30 minutes p/p spa treatment, and health club facilities.



Inclusive of breakfast, complimentary use of leisure facilities, free parking and free Wi-Fi, with easy access to Cambridge.



Includes dinner on the first night, a full English breakfast each morning, leisure facilities, a 30 minute treatment per person and choice of mud serial or aromatherapy bath.

## ...with a gift voucher (or treat yourself?)

Your voucher has been beautifully designed, for you to print at home. Your voucher will be emailed to you, and can be presented on a smartphone to be redeemed.



Terms and conditions apply. Visit website for details.

# Q

quy mill hotel & spa



BOOK NOW AT: [cambridgequymill.co.uk](http://cambridgequymill.co.uk)

01223 293383

Church Road, Stow-cum-Quy, Cambridge CB25 9AF

---

## Food Focus

---

### Mushrooms

According to my brother mushrooms are the devil's food and they do seem to engender a somewhat marmitey reaction. But recently their significant value, both in terms of their contribution to our gut flora and from wild mushrooms to our ecosystems, has been rightfully recognised.



Mushrooms, it seems, have lots of amazing properties. They are one of the few non-animal sources of Vitamin D and you can even increase this benefit by leaving them on the kitchen counter in direct sunlight for anything between 15 and 120 minutes (great idea if you remember).

They contain immune modulating nutrients which help activate part of your immune system, in addition they are likely to support gut health by encouraging a favourable microbiome in your gut, increasingly being acknowledged as very important for overall health (see Tim Spectre's work). There is also some suggestion that they may be helpful in managing heart health and for the prevention of neurodegenerative conditions. 'Give me recipes' I hear you say!

### Thai-inspired Shiitake Mushroom Stir Fry (serves 2)

This recipe (courtesy of Waitrose) was a triumph. An easy, quick to prepare evening meal which is delicious, vegetarian and very acceptable to meat eaters (assuming they like mushrooms).

2 salad onion (I used standard)  
2 x 150g packs shiitake mushrooms (I've tried this recipe with a mix of mixed mushrooms and normal mushrooms – sadly they don't do the job – this is one ingredient you can't substitute)  
1 tbsp olive oil  
1/2 x 25g pack mint, leaves only, torn  
1/2 x 25g pack coriander, chopped  
Steamed jasmine rice, to serve

#### Dressing

1 stick lemongrass, finely chopped  
1 clove/s garlic, finely chopped  
2 tbsp caster sugar  
1 lime, juice

#### Method

Put the ingredients for the dressing into a small blender and whizz until smooth (you can also use a pestle and mortar). Season and set aside.



*Thai inspired stir fry*

2. Halve the salad onions, then slice lengthways. In a large frying pan over a high heat, dry fry the mushrooms, stirring occasionally to prevent sticking. Once they have released their liquid, drizzle in the oil, then continue frying until they are browned all over (about 3 minutes). Tip the cooked mushrooms into a mixing bowl, pour over the dressing and mix well. Add the salad onions and herbs. Mix again and serve with rice.

### Mushroom and Potato Pie (Cranks) Serves 4

I made this once for the children when they were tiny and they actually ate it (this was clearly before they moved into my brother's camp with regards to mushrooms). It is surprisingly tasty and substantial, and I've been meaning to make it again.

#### Ingredients

900g (2 lb) Potatoes  
4 Celery sticks (I never use this as I hate it)  
1 Medium onion  
450g (1 lb) Mushrooms  
75g (3 oz) Butter or Margarine  
60ml (4 tbsp) Milk  
2 Garlic cloves – crushed  
22.5ml (1 1/2 tbsp) Arrowroot  
200ml (1/3 pt) Milk  
30ml (2 tbsp) Chopped parsley  
5ml (1 tsp) Dried thyme  
10ml (2 tsp) Lemon juice  
Salt and pepper to taste

#### How To Make

Cook the potatoes in boiling water until tender. Grate celery, chop onion and mushrooms. Drain the potatoes, add 25g (1 oz) butter and 60ml (4tbsp) milk, then mash until creamy. Season well. Melt the remaining butter in a large saucepan. Add the celery and onion and cook gently until the onion is transparent. Add the mushrooms and garlic and cook, stirring occasionally, for 5 minutes. Blend the arrowroot with a little milk, stir in the remaining milk and stir into the mushrooms. Add the parsley, thyme and lemon juice, and season to taste.

Simmer gently for 5 minutes.  
Turn the mixture into an ovenproof serving dish.  
Top with the mashed potato and place under a hot grill until heated through and golden, or place in the oven at 190°C (375°F/ Mark 5) for about 20 minutes.

### **Mushroom Stroganoff (Sainsburys) Serves 4**

I haven't made this recipe, but I did seek out one using paprika – as I feel that is an essential ingredient in any stroganoff. I'd possibly put in a bit of tomato puree too, but perhaps only to taste.

#### Ingredients

2 tbsp vegetable oil  
1 onion, chopped  
2 garlic cloves, crushed  
¼ tsp smoked paprika  
¼ tsp paprika  
pinch of cayenne pepper (optional)  
1 x 250g pack chestnut mushrooms, thickly sliced  
1 x 400g pack Basics mushrooms, thickly sliced  
200ml white wine

#### Method

In a large, wide, deep frying pan, heat 1 tablespoon oil on a medium-low heat. Add the onion and garlic, cook for about 5 minutes until soft but not coloured. Add both types of paprika, plus the cayenne if using and cook for a couple of minutes, stirring frequently. Tip the onions into a small bowl and set aside.

Add the remaining oil to the pan, then add all the mushrooms and fry on a high heat for about 5 minutes until golden brown all over. Once browned, return the onions to the pan, add the wine and reduce by a third.

Meanwhile, cook the rice in another pan according to the pack instructions. Keep warm until ready to serve.

Turn down the heat under the mushroom mixture, add the mustard and stock. Let this bubble away for a few minutes, then stir in the crème fraîche. Add the zest of the lemon and a squeeze of juice to taste. Season, finely chop the parsley and stir in.

Serve with the rice to mop up the sauce, and a lemony bitter leaf salad, if you like.

### **Catherine Gibson**



---

## **Reach Fair**

---



The planning of Reach Fair 2023 is much advanced which is just as well with just three months to go. We have the very popular musician Graham Buxton and an excellent band, The Casuals, in addition to our regular contributors such as the dance troupe Performance Without Limits.

For the first time in a long while the Dyke's End pub will be running the Beer Tent on Fair Green – a popular venue. The website and our Facebook postings will keep you up to date.

The date for this year's Fair is Monday 1 May – the weekend before the Coronation and its attendant festivities. The Reach Fair organising committee is eight-strong compared to just three last year and we are greatly buoyed up with this enthusiasm and commitment to the Fair. And of course, we want to share this enthusiasm and commitment and will be asking for volunteers to assist just before and on the day of, the Fair.

Ever improving, this year in addition to face-to-face harassment – sorry requests for help - we will be rolling out a digital online Volunteer Rota. In its 800-year history this will be a new addition to the Fair! We think King John would approve.

Contributing to the Fair can be as much or as little as you wish and there are a wide variety of tasks. You can bake a cake, assist with the running of a stall, help set up, litter pick ..... Look out for our groovy new Rota.

Please do contact the committee members with your questions and offers of help:

**Gayle Chapman** [gayleachapman@gmail.com](mailto:gayleachapman@gmail.com)

**Alex de Giorgio-Miller** [a.degiorgiomiller@gmail.com](mailto:a.degiorgiomiller@gmail.com)

**Cristine & Nev Fletcher** [cristinefletcher@hotmail.com](mailto:cristinefletcher@hotmail.com)

**Claire Halpin** [claire.halpinmcdonald@gmail.com](mailto:claire.halpinmcdonald@gmail.com)

**Susan Hatley** [susanhatley@hotmail.com](mailto:susanhatley@hotmail.com)

**Dan Marsh** [dykesendpub@gmail.com](mailto:dykesendpub@gmail.com)

**Oli Rausch** [oliver.rausch@gmail.com](mailto:oliver.rausch@gmail.com)

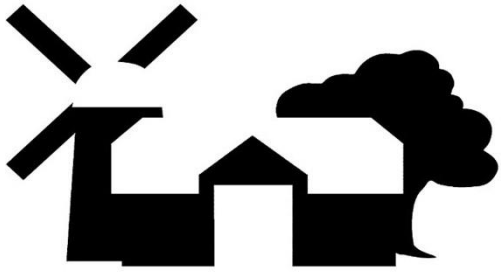
**Claire Halpin-McDonald**



---

## Burwell Museum and Windmill

---



From everyone at Burwell Museum and Windmill we wish you all a very Happy New Year!

Before we know it 'Spring will have sprung' and it will be time for us to open for our exciting 2023 season. We open our season on Easter Sunday 9<sup>th</sup> April 2023, closing for the year on Sunday 29<sup>th</sup> October 2023. We will have many new exhibitions and exhibits to share with you, come and experience our working Windmill, grind the grain and see our new blacksmith and woodturner at work in our forge. And of course for our opening weekend there will be the traditional Museum and Windmill Easter Egg Hunt and Easter raffle too - can you guess what the raffle prizes will be?



Our opening days and hours are Thursday 11am to 5pm and Sunday 11am to 5pm, last entrance is at 4pm.

We do recommend Season Tickets are purchased as they are such good value for our visitors. A Season Ticket gives free entry to the Museum and Windmill throughout the entire season to visit the Museum, the Windmill and all our on-site events and talks too. We have a choice of tickets, an individual one is £15, a Joint ticket is £20 (2 adults at the same address) and a family ticket is £25 (two adults and up to three children at the same address). Please purchase these from our Kiosk at the entrance to the Museum using cash or card from our opening day. Our Season Tickets provide vital income to help to keep the museum open for all to enjoy and ensures we can protect and preserve local artefacts and showcase the history of Burwell and surrounding areas for years to come across the generations.

If you would like to play a part, even for just a couple of hours a week, then we are looking for front of house volunteers to work across the season and help with our event programme too. If you love talking to people, have a love for and interest in the local area and if you would like the opportunity to bring our history to life through storytelling and sharing fascinating facts, then please do contact us via [museum@burwellmuseum.org.uk](mailto:museum@burwellmuseum.org.uk).



We look forward to seeing you!

### Sara Phipps

Trustee of Burwell Museum and Windmill Trustees

---

## Letter from the Vicarage

---

Over the last 3 years, in the midst of all the turmoil the world has been through, I've been encouraged to remember that small steps, multiplied many times over, can make a real difference, particularly as we have worked in partnership with others.



A year on from the invasion of Ukraine and the prospect of an end to the war seems very remote. The effects of the Climate Crisis are becoming more and more obvious. Many are still struggling to make ends meet. But we can make a difference where we are.

The Church's season of Lent begins on Wednesday 22<sup>nd</sup> February, which for many people is a time for looking afresh at making personal lifestyle changes. Perhaps it could also be a time for looking at how we can do things together to make a positive difference in our communities, our nation, our world, making changes to the way we live and use the earth's resources. We can make choices about how we speak to each other and about each other, in person or online. We can seek to live generously and peaceably together, offering hospitality where we can.

Hospitality is one of our key themes for the year and all are welcome at our main Sunday service at 10.00am in St Mary's. On the first Sunday of the month we have Café Church, which begins with refreshments, time to chat and activities on the theme for the week, followed by a short service. Refresh Café is our group for babies, toddlers and their grown-ups, which meets on Friday mornings at St Mary's from 10.00am, with a simple sandwich lunch from 11.30am. We offer a very warm welcome to any little ones and their parents/carers.

Messy Church is re-establishing a regular pattern of Sunday afternoon gatherings and we welcome families with children of all ages. We are delighted that almost all the building work has been completed on St Etheldreda's Church and we are planning celebratory events when the building is fully re-opened. Landscaping and planting for biodiversity of the churchyard will follow as we move into spring and we are very much looking forward to using the whole site.

Alongside our regular activities we have some special events coming up: on 19<sup>th</sup> March at 10.00am is our Mothering Sunday Thanksgiving Service at St Mary's, where posies of flowers will be given out. More details of our Easter services will be in the next edition.

We're coming into wedding season and if you are planning to get married, but not yet sure about where, why not think about a church wedding at St Mary's, Burwell or St Etheldreda's, Reach? For many couples it represents a link to family and to tradition and the 'right place' to celebrate with friends and family as you make your vows before God. The Church of England has an excellent section on its website with a lot of useful information, explaining the practicalities of arranging a wedding: [www.churchofengland.org](http://www.churchofengland.org).

If you'd like to find out more about who we are and what we do or get more involved in the life of St Mary's and St Etheldreda's please get in touch. Please also get in touch if you would like to chat or if we can pray for you, if you are struggling, or know someone who is, or need help accessing Ely foodbank. Up to date information on services and activities for all ages is on our website and Facebook page.

God bless you

**Eleanor Williams Vicar of Burwell with Reach**

01638 741262

[vicar@stmarysburwell.org.uk](mailto:vicar@stmarysburwell.org.uk)

[www.stmarysburwell.org.uk](http://www.stmarysburwell.org.uk)

<https://www.facebook.com/stmarysburwell/>

---

## Reach Church Development Update

---



Since the last update, the pews have returned and new chairs have arrived, so St Etheldreda's is looking much more like a church than a building site. People who came to the funeral and the Christmas services remarked that, while it definitely looks bigger and brighter, it still has the same feel and is a beautiful space. It's also nice and warm!

Unfortunately, for insurance reasons, we can't yet leave the church open and unattended until the builders formally hand it over to us. We hope the core matters affecting safety and security will be finished very soon now, although some things, like the path and the altar rail will take some time to complete.

The commemorative plaque for Maisie Whitehead, whose generosity made the project possible, has also been delayed. This is because the Chancellor of the Diocese of Ely, who has to give permission for matters in church buildings, has asked for modifications to the design.

He commented that plaques were not usually permitted these days, except in very exceptional cases, but he considered that Maisie's service and generosity for such a long period were exceptional and that he would permit a plaque. He asked that the inscription should reflect her long service, particularly as organist. We are now working to make the necessary changes to the design.

We're now beginning to think what pattern of services to have in Reach and other ways we might use the church. We have lots of ideas, including a possible group for babies and toddlers with their grown-ups, similar to Refresh Café in Burwell, so please look out for more details of this on Facebook and email.

**Reach Church Development Group**

## Church Services

Please note that these service arrangements may alter when St Etheldreda's fully re-opens.  
Please check our website or the weekly news sheet for up to date information.

February 2023	St Mary's Burwell	St Etheldreda's Reach
<b>Sunday 5<sup>th</sup></b> <b>3<sup>rd</sup> before Lent</b>	10.00am Café Church	8.30am Holy Communion
Wednesday 8 <sup>th</sup>	10.30am Holy Communion	
<b>Sunday 12<sup>th</sup></b> <b>2<sup>nd</sup> before Lent</b>	10.00am Holy Communion 7.00pm Sunday@7	
Wednesday 15 <sup>th</sup>	10.30am Holy Communion	
<b>Sunday 19<sup>th</sup></b> <b>Next before Lent</b>	8.30am Holy Communion 10.00am Holy Communion	
Wednesday 22 <sup>nd</sup> <b>Ash Wednesday</b>	10.30am Holy Communion	7.30pm Holy Communion
<b>Sunday 26<sup>th</sup></b> <b>Lent 1</b>	10.00am Holy Communion	
March 2023	St Mary's Burwell	St Etheldreda's, Reach
Wednesday 1 <sup>st</sup> March	10.30am Holy Communion	
<b>Sunday 5<sup>th</sup></b> <b>Lent 2</b>	10.00am Café Church	8.30am Holy Communion
Wednesday 8 <sup>th</sup>	10.30am Holy Communion	
<b>Sunday 12<sup>th</sup></b> <b>Lent 3</b>	10.00am Holy Communion 4.00pm Messy Church 7.00pm Sunday@7	
Wednesday 11 <sup>th</sup>	10.30am Holy Communion	
<b>Sunday 19<sup>th</sup></b> <b>Lent 4</b>	8.30am Holy Communion 10.00am Mothering Sunday service	
Wednesday 22 <sup>nd</sup>	10.30am Holy Communion	
<b>Sunday 26<sup>th</sup></b> <b>Lent 5</b>	10.00am Holy Communion	
Wednesday 29 <sup>th</sup>	10.30am Holy Communion	



**Scan QR code to go to our website for more  
details and links watch Sunday morning livestream  
on Facebook**  
<https://stmarysburwell.org.uk>  
[www.facebook.com/stmarysburwell](http://www.facebook.com/stmarysburwell)





---

## Sewers in Reach

---

### .... or are we sewists?

Whatever the case, Friday afternoons in the village Hall are productive! Antique sewing machines have appeared, half done projects restarted and rusty skills remembered. Under the careful guidance of our tutor, Linda, confidence has grown.

Many started with simple projects under close supervision. Projects in Term 1 included cushions, a dress, simple bunting, a wall hanging, a patchwork quilt and a range of bags / rucksacks. Now in our second term, sewing machines have been upgraded and projects are pursued in earnest!

If anyone wants to learn to sew, extend their skills or just enjoy company on a Friday afternoon, please do get in touch. Everyone is welcome. The class currently runs from 1.30 – 3.30pm and overlaps with the Community Café which starts at 3pm.

NB An unlimited number of social places (just sit in for a chat) as well as some sewing places are currently available. And if there is sufficient interest, we could run a second sewing class after Easter.

Many thanks to the Amenity Fund for their encouragement and part-funding of Term 1.

Helen and Claire

[helenoliver01@btinternet.com](mailto:helenoliver01@btinternet.com) or [claire.halpinmcdonald@gmail.com](mailto:claire.halpinmcdonald@gmail.com)



---

## Charity Art Exhibition Coming Soon

---

Local charity Rowan is getting ready to launch its annual art exhibition, on 18 and 19 February in Cambridge.

The exhibition, which will be held at The Leys School, will be open to the public and attendees will have the opportunity to purchase artworks. All the money raised from art sales will go to the charity, which supports adults with learning disabilities.

Entitled 'Together', the exhibition showcases the work of local artists who have produced artworks inspired by being together. Every piece, whether by amateur or professional, will sell for £45.



Rowan's annual art exhibition is all about the community, everyone is invited to enter a piece of artwork whether they are a beginner or a well-known artist. All the artwork on sale will be anonymous and sold for the same price, allowing everyone to get involved. The event, which is free to attend, will also feature a silent auction of work donated by established artists from all over the UK as well as a pop-up shop of artwork created at Rowan.

**Rowan's annual art exhibition is open 10am – 3pm, 18 – 19 February 2023, at The Leys School, The Fen Causeway, Cambridge, CB2 7AD. Entry is free. For more information visit [www.rowanhumberstone.co.uk](http://www.rowanhumberstone.co.uk) or call 01223 566027.**

### Rowan

Rowan is a vibrant, independent registered charity providing an arts centre and forest school for adults with learning disabilities. Since 1984 we have provided a safe, creative and enriching environment where the arts are used as a tool to bring people together and tackle social exclusion. We develop the skills and potential of our students while improving their happiness, health and wellbeing. We also deliver much needed respite to families and carers.

Rowan provides a range of creative workshops in woodwork, ceramics, textiles, print, mixed media, drama and music. We are open Monday to Friday, 9am–3pm, 50 weeks a year. We arrange regular trips out to theatres, museums and exhibitions to explore art and culture further and in 2020 we launched Rowan Rangers, our forest school that enables students to be creative and connect with nature.

We have a strong social enterprise ethos and accept both large and small-scale commissions from individuals and organisations. Rowan also runs a range of community art classes during the evenings and weekends and our venue is available to hire outside our creative workshop hours.

We believe that people living with a disability should have the same choice, quality of life, opportunities and aspirations as others and with your support we can continue to make this possible.

**Twitter: @RowanCambridge Facebook: @RowanCambridge Instagram: @RowanCambridge  
LinkedIn: Rowan Vimeo: RowanCambridge Website: [rowanhumberstone.co.uk](http://rowanhumberstone.co.uk)**

---

## Know Your Parish Council

---

Your councillors are:

Charlotte Cane	Chair	741064
Cristine Fletcher	Councillor	07763 529886
David McMillan	Councillor	741259
Matt Newman	Councillor	07786 988175

There are currently 3 vacancies

Charlotte Cane	District Councillor
John Trapp	District Councillor
Joshua Schumann	County Councillor

Meetings take place in the **Village Hall** on the first **Tuesday** of each month. They start at **7.00pm** and all Reach villagers are welcome to attend.

Your Clerk is Susan Bailey  
29 Great Lane Reach CB25 0JF 01638 743794  
[clerk@reachparishcouncil.org](mailto:clerk@reachparishcouncil.org)

---

## Become a Parish Councillor?

---

- Are you passionate about Reach and our community?
- Do you want to help make a long-lasting change?
- Do you have innovative ideas for the council?
- Do you have concerns about a specific issue and want to do something about it?

If this is you, then Reach needs you. We need people from all backgrounds and experiences who reflect our community to join the Parish Council. You can join now by being co-opted, please contact Susan Bailey, [clerk@reachparishcouncil.org](mailto:clerk@reachparishcouncil.org), who will help you apply.

Or you can put yourself forward for election on 4 May 2023. Your nomination will need to be hand delivered to the District Council by 12.00 noon on 4 April. Or you can submit it to the Clerk, who will deliver all nomination papers to the District Council – check with her what her deadline will be (it will be earlier than 4 April). Nomination forms can be provided by the Clerk, or can be downloaded from the District Council website – <https://www.eastcambs.gov.uk/sites/default/files/Nomination%20Packs%20-%20Parish%20Councillor.pdf>

Councillors must either live or work in Reach or live within 3 miles of Reach. Becoming a councillor is a rewarding experience. A councillor's role can include developing strategies and plans for the area, helping with problems and ideas, representing the community, working with other local community groups, decision making and reviewing decisions and talking to the community about their needs and what the council is doing.

---

## Know Your District Councillors

---

In December we informed residents that the District Council's Advice Bus would visit Burwell every Thursday morning and Bottisham every Thursday afternoon. Unfortunately, this did not happen regularly in December for a variety of reasons. Although we are assured it will be visiting regularly on Thursdays from January, we must advise anyone planning on visiting the Advice Bus to ring ECDC on 01353 665555 first to check it is coming. Alternatively, the CAB in Newmarket offers phone advice Mon-Fri 9.30am-3.30pm on 0808 278 7868, or drop-ins Monday, Tuesday and Thursday 9.30-2.30.

The Operational Services Committee received the Q1 (April to June) performance report on waste and street cleansing services—a reminder of how long it took the Council to get to grips with the problems which led to our rubbish not being collected.

- Overall performance of the waste collection service: target 90 per cent, quarterly performance 33%
- Overall performance of the street cleansing service: target 90%, quarterly performance 21%

Even by Q2 (July to September) waste collection performance had only recovered to 58% against a target of 90% and street cleansing to 48% also against a target of 90%.

As well as inconvenience to residents, these problems meant the crews were asked to work significant overtime in order to catch up on missed collections. Its hard work collecting our rubbish and the crews deserve and need their rest days – they shouldn't have to work those days for several weeks in a row.

There were some missed/late bin collections in January, because of problems with vehicles. The crews have worked overtime to catch up with the collections. If your collections are missed, please report that at - <https://www.eastcambs.gov.uk/east-cambs-street-scene/report-missed-collection> or call 01353 665555. You can also report it to us and we will chase it up for you.

Black bin bags have now been delivered to Reach. If you haven't received yours, please report it to us and we will chase it up for you.

On the subject of waste, there is information about what can go in your green and blue bins and what needs special collections/disposal at:

<https://www.eastcambs.gov.uk/east-cambs-street-scene/what-we-collect>

Another report to the Operational Services Committee on the condition of housing in East Cambridgeshire has produced some interesting headline findings.

- There are 37,556 dwellings in East Cambridgeshire. 72% per cent are owner occupied, 15% private rented, and 13% social rented.



- 5,338 dwellings in the private sector have Category 1 Housing Health and Safety Rating System (HHSRS) hazards. This equates to 16% of properties.
- 951 dwellings in the private rented sector have category 1 HHSRS hazards. This equates to 17% of properties in the private rented sector.
- The average Simple SAP rating (checking energy performance) for all private sector dwellings in East Cambridgeshire is 58, which is worse than both England (60) and East of England (60). For owner occupied stock the figure is 57 and for private rented stock it is 61.
- The total cost of mitigating category 1 hazards in East Cambridgeshire's private sector stock is estimated to be £20M, £16.5M in the owner-occupied sector and £3.6 million in the private rented sector.
- 10.7% (3,487) of private sector dwellings, and 8.6% (472) of private rented dwellings in East Cambridgeshire are estimated to have an EPC rating (based on Simple SAP) below band E.
- In the private sector stock, there are an estimated 4,680 dwellings with uninsulated cavity walls and 3,251 dwellings with less than 100mm of loft insulation.

Analysis of the energy efficiency variables indicates that the owner-occupied stock has the highest average figures for the majority of variables (Simple CO<sub>2</sub>, energy and heat demand).

The key objectives of the policy are to

- Enable elderly, vulnerable and disabled people to live in comfort and security in their homes.
- Increase the proportion of private sector housing that is of a decent standard, with a focus on those that are occupied by vulnerable households.
- Reduce fuel poverty.
- Support initiatives to bring long term empty homes back into use.
- Provide accessible information to the public to enable them to obtain assistance and advice on all matters around housing disrepair and energy efficiency.

The report concludes: "It is therefore important for East Cambridgeshire to develop suitable targeted strategies, policies and schemes to tackle these issues, working proactively with different departments and partner organisations, using enforcement action, where appropriate.

The Council's Finance & Assets Committee agreed unanimously last month to a new Interim Nature Recovery Network for East Cambridgeshire report and Biodiversity Net Gain document. The former document identifies a number of priority areas for biodiversity, namely Wicken Fen, the Ouse Washes and surrounds, Newmarket chalk grasslands, Chippenham Fen and River Snail, Breckland Edge, Soham grasslands, Boulder Clay woodlands, Chettisham Meadows to Ely North Country Park, and the river corridors of the Great Ouse, Cam, Lark, Little Ouse, and Soham Lode. The latter document is an interim working document prior to the implementation by the Government of mandatory Biodiversity Net Gain expected in late 2023.

The Combined Authority found £3.5m this year, to provide the funds to keep the number 11 and other buses running for 6 months when Stagecoach suddenly pulled the services. They will shortly be finalising their budget for 2023/24 and Charlotte was a substitute member on the Overview & Scrutiny Committee to review the draft budget. She was disappointed to find that only the £3.5m was included – only half what would be needed to keep the buses running for a year. She raised this and the rest of the Committee agreed to ask the Combined Authority to find at least £7M for each of the next two years to fund our bus services. This just maintains the current position, we still need improvements not least to get the number 11 stopping at Bottisham.

The Combined Authority is consulting on its bus strategy, with a closing date of Friday 24th February at 5pm: <https://cambridgeshirepeterborough-ca.gov.uk/news/combined-authority-to-relaunch-6-week-bus-strategy-consultation/>. There have been a lot of consultations recently, but if we want better bus services we need to take every opportunity to make the case.

The Greater Cambridge Partnership Making Connections 2022 consultation closed on Friday 23 December. Around 23,000 responses were received, and the Greater Cambridge Partnership expects to publish a final report on the consultation outcomes and next steps, for consideration by its Board in June 2023.

The consultation is about proposals for public transport improvements and better cycling and walking options, as well as about the element which has been most talked about, a congestion charge. We expect the proposals in the consultation, including the proposal for a congestion charge, to be significantly changed by the public response to the consultation. Indeed, we hope they will be, as we struggle to support them as they stand.

In December the Licensing Committee agreed to consult on the installation of CCTV in Taxis and Private Hire Vehicles, as set out by the Department for Transport. The consultation opened on December 19th and will end at 3pm on Monday 13th March 2023 - <https://www.eastcambs.gov.uk/licensing/licensing-policies>

For February, we will be holding our Councillors' Surgeries by zoom, to save people coming out in the cold and the dark. Our next Surgery Zoom will be at 6.30pm on Wednesday 15 February – Meeting ID: 865 7631 8040, Passcode: 490667. If you prefer to join by 'phone, the number is 01314 601196. Our March Surgery will be on Tuesday 28 March at Reach Village Hall. Or you can contact us directly at any time:  
[charlotte.cane@eastcambs.gov.uk](mailto:charlotte.cane@eastcambs.gov.uk) 07976 607512  
[john.trapp@eastcambs.gov.uk](mailto:john.trapp@eastcambs.gov.uk) 01223 812120

---

## Parish Council Meeting Minutes

---

### Minutes of Reach Parish Council meeting Tuesday 6<sup>th</sup> Dec 2022

<b>Attendance</b>	Charlotte Cane	Chair	Present
	Nick Acklam	Vice Chair	Present
	David McMillan	Councillor	Not Present
	Cris Fletcher	Councillor	Present
	Matt Newman	Councillor	Present
	Susan Bailey	Clerk	Present
	Charlotte Cane	District Councillor	Present
	Joshua Schumann	County Councillor	Not Present

**Apologies for absence** - Approved.

#### **Forum for members of the public.**

A member of the public attended to listen to the Parish Members reports. A member of the cricket team and village hall committee attended to give details of the funding the cricket team would like to apply for to provide rabbit proof fencing, side screens and possibly another compost toilet. The village hall would also like to apply for planning permission for solar panels on the hall roof. Both projects would like the support and assistance from the PC.

#### **Declaration of Interests**

Councillor Cane declared an interest in the Solar farm discussions and Councillor Cane & Councillor Acklam declared an interest in VH Committee's request for support in securing planning approval for solar panels, and did not participate in the discussions.

**1. Planning – Harrier House, 15 Chapel Lane.** Resident's proposal to improve pedestrian access from Chapel Lane by laying steppingstones across unregistered land. Vehicle access to the property is via The Hythe but pedestrian access is to the front of the house is via Chapel Lane. The pedestrian route, which has existed since Harrier House was built, involves crossing a piece of land of unknown ownership (the Land Registry has no record). The occupier has managed this patch for 40+ years. Historically no-one has objected to pedestrian access to Harrier House via Chapel Lane. The path across the patch of ground is currently turf and becomes boggy in the winter. The occupier wishes to insert paving slabs as steppingstones across the ground. The PC has no planning mandate, but the occupiers wished to establish a view. Following discussion, the PC had no objection to the proposal. The slabs would be permanent and could be removed and the turf restored very easily should that ever be required. The PC would advise that the job is done properly and that the occupiers check with their insurance.

**22/01278/FUL** - 21 Fair Green, Proposed single storey rear extension & new timber garage building

Site visit by Nick Acklam on 5 December 2022

Development plan The property is within the current development envelope and conservation area. It is listed as a Heritage Asset in the draft Neighbourhood Plan. The proposed garage would allow off-road charging of electrical vehicles and the pitch of the garage roof has been designed to allow subsequent PV panels to harvest as much solar energy as possible. These approaches to development are encouraged in the Reach Design Code.

Local plan No points additional to those made above.

Previous applications/appeals - 03/00936/FUL erection of a single storey timber framed conservatory. Permitted 2003.

Loss of sunlight None. I visited 20 Fair Green (Cross Keys) with its owner present to gauge loss of sunlight. Loss of winter sun would have been an issue but for the existing two storey rear extension on 22 Fair Green which given its height and the fall of the land means that this proposal would have minimal additional impact.

Overshadowing/loss of outlook The proposal involves raising the party wall between the property and 20 Fair Green by about a metre. The owner of 20 Fair Green, who is most obviously impacted by the proposal, has no objection to the scheme.

Overlooking and loss of privacy The proposal does not create privacy issues for neighbouring properties given the positioning of windows and existing and proposed walls.

Highway issues: Traffic generation, Vehicular access, Highway safety The proposed garage would generate a small amount of additional traffic on public Byway 8 (Little Back Lane) which runs to the rear of the property. It would take two cars off Fair Green and would enable off-road electrical recharging.

Noise or disturbance resulting from use, including proposed hours of operation None.

Smells and fumes None

Capacity of physical infrastructure Not relevant

Deficiencies in social facilities Not relevant

Storage and handling of hazardous materials and development of contaminated land Not relevant

Loss or effect on trees One small plum tree would be removed to enable the construction of the garage.

Adverse impact on nature conservation interests & biodiversity opportunities None

Effect on listed buildings & conservation areas Although not listed, the property forms part of a terrace in which nos. 22 & 23 Fair Green are Grade II listed. The property itself & the neighbouring property 20 Fair Green Cross Keys are listed as Heritage Assets in the draft Neighbourhood Plan.

Incompatible or unacceptable uses None

Local Financial considerations offered as a contribution or grant Not relevant

Layout and density of building design, visual appearance and Finishing materials ECDC's conservation officer considers the extension of the rear of the property compromised by the existence of a pre-existing conservatory which he considers "over-scaled." He is also unhappy with the mono pitch roof of the proposed garage. He recommends refusal on both grounds.

Inadequate or inappropriate landscaping or means of enclosure The proposed rear extension would be obscured from public sight by existing hedge walls & fence. The fall of ground in the rear garden further reduces the visibility of the extension. The proposed garage would be visible from Little Back Lane but is of a form and scale that is consistent with the garage in 22 Fair Green, the adjoining property.

Conclusion of outcome: No comment

Following discussion, the PC agreed with the report.

**CCC/22/083/FUL** - Land Between North Angle And Swaffham Prior Energy Centre including compound At High Town Drove, Burwell. Construction of a private underground power cable with associated electrical and communications equipment between North Angle Solar farm and Swaffham Prior Energy Centre; erection of electrical substation/switch gear buildings with associated temporary & permanent compound & parking at High Town Drove; installation of new transformer/switch gear at the Swaffham Prior Energy Centre with associated temporary compound; and temporary typical mobile CPEN cable recycling layout.

Again, the main discussion regarding this application was the cumulative effect of the many solar farm applications on Burwell Fen. It was noted that Burwell PC had not objected. It was felt that these solar farms do have an effect on Reach and will be of great visual intrusion and are an industrialisation of the area. It was agreed that the PC should continue to comment on the lack of planning guidelines for the cumulative effect of the solar farm applications and their visual intrusion effecting Reach. **Councillor Acklam** to respond.

Councillor Acklam had been asked to speak at the next Sunnica meeting, the PC agreed to this.

## **2. District Councillor Report**

### GCP Consultation

There is a briefing session by zoom for Parish Councils on 8 December 6.00-7.30. To find and more and register, please visit:

[https://us06web.zoom.us/webinar/register/WN\\_\\_2MqrbHtRN2UsQIWoymn0A](https://us06web.zoom.us/webinar/register/WN__2MqrbHtRN2UsQIWoymn0A)

There will be an Extraordinary Meeting of the District Council on 15 December to discuss the Council's response. Unfortunately, this was arranged at short notice and earlier than usual so we are not sure if we can rearrange our existing commitments and may not be able to attend.

### Advice Bus

The East Cambs Housing and Community Advice Team's Advice Bus will visit:

Burwell, Mandeville Hall every Thursday from 10.00am-12 noon.

Bottisham, Sports & Social Club every Thursday from 1.00pm-3.00pm

Unfortunately, after we sent this to the Parish magazines, we were told that the bus will not visit between 16 December and when visits restart in the New Year. Despite several attempts, I have not been given a date for when the visits will restart in the New Year.

### Operational Services

Reviewed the EC Street Scene Accounts and the Performance Reports for Waste & Street Cleansing Services for the period April to June 2022.

Agreed to delegate to the Planning Manager, in consultation with the Chairman of Operational Services Committee, to adopt additional entries to the East Cambridgeshire Register of Buildings of Local Interest.

Agreed revised Building Control Fees and Charges from January 2023.

Agreed a Private Sector Housing Enforcement Policy and the Private Sector Housing Renewal Policy.

Agreed the Children and Adults at Risk Safeguarding Policy.

Agreed several community grants.



## Finance and Assets Committee

Agreed:

(A) Acknowledges the global biodiversity emergency and the local impact this could have on the communities and businesses we serve.

(B) Adopts the Interim Nature Recovery Network for East Cambridgeshire (August 2022) attached at Appendix A to the submitted report and asks the Corporate Management Team to ensure all future plans and strategies of this Council play their part, where appropriate, in helping to deliver the aims & recommendations within it.

(C) Endorses the Biodiversity Net Gain: East Cambridgeshire (November 2022), document attached at Appendix B to the submitted report, for the purpose of an interim working document Strategic Planning Manager EAST  
CAMBRIDGESHIRE DISTRICT COUNCIL Finance & Assets Committee – 241122 Decision List PUBLIC prior to the implementation of mandatory Biodiversity Net Gain expected in late 2023.

Increased the Growth and Infrastructure Fund to £2,307,216 and gave several grants, including:

£250,000 to National Trust- Wicken Fen Burwell Lode Crossing

£105,000 to Bottisham Parish Council - Bottisham New Cemetery

And £700,000 to Stretham Parish Council - Stretham Community Hub plus CIL Funding allocation of up to £766,666. A total of nearly £1.5m for a project which a recent Parish Poll showed the village wanted paused until after the Parish Council Elections in May (by 2:1).

## Waste Collections

Having been delayed since Autumn, the annual delivery of black sacks has now started. Households will receive a roll of 52 sacks by 16th January 2023.

To allow the crews to enjoy a Christmas break, the collection dates will be changed across Christmas.

Collections due on Monday 26 December will be collected on Wednesday 28 December

Collections due on Tuesday 27 December will be collected on Thursday 29 December

Collections due on Monday 2 January will be collected on Wednesday 4 January

Collections due on Tuesday 3 January will be collected on Thursday 5 January

Collections due on Monday 9 January will be collected on Tuesday 10 January

Collections normally due on Tuesday 10 January will be collected on Wednesday 11 January

## **3. County Councillor Report**

None received. A report was received via the District Councillor after the meeting.

### COST OF LIVING Social tariffs

The government has worked with a range of Internet Service Providers (ISPs) and Mobile Network Operators (MNOs) to deliver low-cost broadband and phone service packages, called social tariffs, for those on low incomes. Social tariffs are available for people claiming Universal Credit, Pension Credit and some other benefits, with some providers offering deals from £15 a month.

### Warm Home Discount scheme reopened

The Warm Home Discount scheme will provide a discount of £150 off electricity bills for three million low-income households this winter. Most households will receive the discount automatically. The government has launched a new online tool to make it easier to check if you are eligible for the discount. This will guide customers through the eligibility criteria, asking questions about electricity supply, the benefits they receive and characteristics of their property. All customers will receive a letter between November and mid-January confirming eligibility and the payment will be made automatically through energy suppliers by March 2023. The government is also writing to customers who may be eligible, advising them to use the tool below to check eligibility, and use the helpline for particularly complex cases.

<https://www.gov.uk/the-warm-home-discount-scheme>

### WaterCare

Anglian Water offers a range of financial assistance to those needing a helping hand. This includes including discounted tariffs, assistance if you have fallen behind with payments, and affordable payment plans.

<https://www.anglianwater.co.uk/help-and-advice/water-care/>

### FULL COUNCIL -Full Council meeting 13 December

The Council's business will include five motions for debate.

- A Conservative motion calling for the composition of all Council working groups to mirror the overall composition of the Council.
- A Lib Dem motion calling for managed divestment by the Council's Pension Fund from fossil fuels.
- A Labour motion on local level support for asylum seekers and migrants.
- A Conservative motion calling for the employment of an independent organisation to scrutinise the current consultation by the Greater Cambridge Partnership on bus service improvements and congestion charging in Cambridge.
- A Conservative motion asking officers to collect data and draw up maps of road space, roadworks, road closures, bus reductions and other information following theories that these events were deliberate attempts to mislead the public about the level of traffic congestion in Cambridge during the current consultation by the Greater Cambridge Partnership.

## STRATEGY & RESOURCES COMMITTEE

### Budget

The County Council faces a budget gap of about £29M due to inflation, as reported previously. At the time of writing, much work has been done to close that gap ahead of the February budget meeting, but a £13M gap remains to be filled. Detailed papers are being presented to December committee meetings.

### COMMUNITIES, SOCIAL MOBILITY & INCLUSION (COSMIC)

#### Cultivate Cambs awards

The Committee is being asked to make grants to seventeen projects, including the following with a delivery area covering East Cambs.

- A permanent Wellbeing Hub for children and families who have experienced domestic abuse or trauma (Cambridge Acorn Project CIC)
- A new Meals on Wheels delivery base in Fenland to reach customers who cannot be reached from Cambridge (Cambs Meals on Wheels)
- A pilot of holistic support for young adult carers aged 16-25 (Centre 33)
- Extension of specialist sight loss and visual impairment clinical psychology service (Fight Against Blindness)
- Collaborative working on food access and a Food Poverty Action Plan (Luvely—formerly the Garage Community Trust)
- To increase digital inclusion by purchasing three NHS recommended digital rainbow tables (Red2Green)
- Surplus Food Meal Kits for families unable to afford or access a healthy diet (Re-imagine Resource Centre CIC)

#### Repair cafés

Cambridge Carbon Footprint charity has submitted a proposal for a one-off piece of work to support the roll-out of repair cafés in areas that do not currently have access to them. More information about repair cafés at

<https://cambridgecarbonfootprint.org/repair-cafes/>

## ENVIRONMENT & GREEN INVESTMENT

### Cambridgeshire's carbon footprint

The Environment & Green Investment Committee received its annual update on carbon emissions from Cambridgeshire County Council, and from Cambridgeshire as a whole.

#### Cambridgeshire County Council

The Council's carbon emissions fall into three categories.

- Scope 1: direct emissions
- Scope 2: purchased electricity
- Scope 3: indirect emissions from assets outside the council's direct control.

The vast majority (95 per cent) of the Council's carbon emissions are 'Scope 3'. The council's carbon emissions for Scopes 1 and 2 were 1 per cent higher than the previous year, but 19 per cent down on the 2018-19 baseline. Scope 3 emissions were 4 per cent higher than the previous year, but 45 per cent down on the 2018-19 baseline, mostly due to reduced construction activity.

#### Cambridgeshire

Calculation of the county's carbon emissions now includes methane (CH<sub>4</sub>) and nitrous oxide (N<sub>2</sub>O) as well as carbon dioxide (CO<sub>2</sub>). This means that emissions from agriculture and waste are now more fully accounted for. 2020 is the most recent year of data currently available at the time of writing. In that year, the total GHG emissions for Cambridgeshire were 6.89 million tonnes CO<sub>2</sub>e—a 5.9 per cent reduction compared to 2019. However, 2020 is the year that the global COVID-19 pandemic hit, and some of the reductions will be due to reduced transport and business activity as a result of the UK-wide lockdowns during that year.

Land use, land use change and forestry remain the highest emitting sector in the county, followed by transport. Carbon emissions by district is always an interesting comparison. Of course, East Cambridgeshire has half the population of Huntingdonshire so on a population basis these figures would look very different.

#### Optimising the revenue from our energy projects

The Environment & Green Investment Committee has agreed to engage a specialist energy market services provider to help the council increase the revenue it generates from selling renewable energy and battery storage services from the Council's large energy services.

## HIGHWAYS & TRANSPORT

### 20MPH schemes

The Highways & Transport Committee is being asked to approve two changes to the Council's policy on 20MPH speed limits, and a new prioritisation matrix to enable it to assess applications for 20MPH schemes in Cambridgeshire.

The first change would remove the requirement that mean speeds should already be 24MPH or less on any road being considered for a 20MPH limit.

The second change would encourage extended area-based schemes rather than isolated roads or culs-de-sac.

The proposed prioritisation matrix consists of five questions.

1. Does the application address a known safety issue?
2. Could the suggested scheme increase safety for vulnerable highway users and encourage active travel modes?
3. Does the application maximise the impact of the introduction of 20MPH?
4. Does the application have demonstrable local support?
5. How deliverable is the scheme?

### Drought damaged roads

Following up on the November the Chair of the Environment and Green Investment Committee continued to meet with the Leader of the Council and the chair and vice-chair of Highways & Transport to address the issue of drought damaged roads. Officers are gathering information and liaising with neighbouring councils about a joint approach to this very significant problem on large numbers of local roads.

### Civil Parking Enforcement

The County Council, Combined Authority and Greater Cambridge Partnership are discussing a collective funding offer to support the initial costs for Fenland, Huntingdonshire, and South Cambridgeshire district councils in setting up civil parking enforcement (where on-street parking is enforced by the councils not by the police). This will require up to £150,000 from each body (£50,000 per funder for each district). These contributions are subject to respective approval, and discussions continue, particularly with the CPCA, to identify additional funding. The same offer will be made to East Cambridgeshire District Council should it decide to join the rest of the country and adopt civil parking enforcement.

### IN OTHER NEWS

- Cambridgeshire Fire and Rescue Service is looking for local residents and business owners to get involved in a new online feedback forum to share their views and opinions about the work of their local fire and rescue service. Anyone who signs up before Monday 19 December will be entered into a free prize draw to win a £50 gift voucher. If this is something you think might interest you, do read more at <https://www.cambsfire.gov.uk/news-and-incidents/news/2022/11/2022-11-22-fire-service-launches-community-forum>
- As austerity bites, the Cambridgeshire Schools Forum—a consultative body of schools with which the County Council meets regularly—met in early November amid rising concern about the practical impact of 'desperate' financial pressures on schools and Academy Trusts and agreed the need to bring concrete examples to the attention of local MPs.

### Meanwhile on the Combined Authority

A revised draft Bus Strategy has been presented to the Combined Authority's Transport & Infrastructure Committee and the Board. This sets out the principles of how the Combined Authority aims to achieve its ambition to more than double bus patronage by 2030. More details will be set out in the Combined Authority's revised Bus Service Improvement Plan. An extension of the 'Ting' trial of Demand Responsive Transport, which provides bus services to 46 villages in West Huntingdonshire, was 'called in' by the Leader of East Cambridgeshire District Council. Her proposal to seek to open a renegotiation of the contract was defeated by 4 votes to 3. The decision of the Transport & Infrastructure Committee therefore stands and the extension of the trial, now under a new provider Vectare, continues.

The Government has still not provided clarity on funding the next steps of the Ely Area Capacity Enhancements to provide more rail capacity around Ely. This affects the ability of the Combined Authority to press ahead with plans for rail connections to Wisbech; and the Snailwell Loop which would allow improved services from Soham. Lobbying continues. The work on implementing the Combined Authority's Improvement Plan continues, under a Board chaired by Lord Kerslake. Appointments are continuing to be made to fill the various staffing gaps in the organisation.

## **4. Minutes of previous Meeting**

The minutes were agreed and approved.

### **5.1 Reach Grant Fund**

Nothing to report

### **5.2 Finance**

The report was noted.

### **5.3 Parish Council Members**

Councillor Acklam had attended a Sustrans meeting to discuss the cycle route from Swaffham Prior & Reach to Burwell. Councillor Acklam spoke for the route to go Swaffham Prior – Reach – Burwell. This route via Reach does not have much support. All options will be expensive, and funding will be an issue. There may be a cheaper option for Reach to Burwell via Weirs Drove however the tight bends are a concern, a reduced speed limit is a possibility. The AtoB1102 group stated that the routes should not be thought of in isolation but as part of the larger strategy to link up with larger transport hubs. **Councillor Acklam** to write supporting the Swaffham Prior – Reach – Burwell route.

Councillor Cane and the Clerk had a meeting with a resident, regarding the proposed changes of the development envelope in the draft Neighbourhood plan. The resident would like the PC to reconsider the previous decision and revert to the original envelope. The PC will review the draft Plan once it has been submitted by the NP Group and prior to it going to ECDC and an independent examiner. The PC will review all areas of the draft Plan where responses to the consultation requested revisions, including the development envelope. The resident would also like a full report covering her complaint points regarding the processes followed by the PC prior to the decision to approve changes to the development envelope in the draft NP. Discussion took place as to whether this was reasonable, how it could be done and the precedent it may set for future decision making of the PC.



**Councillor Fletcher** to bring a plan as to how a review may take place to the January meeting for discussion & a decision as to whether a review is viable.

#### **5.4 Play Spaces**

Kompan had sent a fitter to inspect and repair the loose bolts on the playground. Councillor McMillan met him onsite. The fitter came with new bolts and fittings but had more success tightening the old fittings than installing new ones. On inspection the original bolts had been coated with 'Loctite,' so that is not a way of curing our problem. Councillor McMillan fitted the bracket to the swing. The fitter went round and tightened everything he could find loose. He replaced the panel that had come out of the puzzle and said he would enquire about new graphics and adhesive for the puzzle. This may need following up. The visit was about 2 ¼ hours and FOC as a goodwill gesture. The PC needs to check the screws as a regular matter. The main requirement is a T40 Torx key. **Councillor McMillan** to buy one. A new play spaces officer is required as Alex de Giorgio-Millar no longer has the time to do this.

#### **5.5 Rights of Way**

Nothing to report.

#### **5.6 24Acres Committee**

Councillor Acklam stated that 100 saplings had been planted, and the wood is establishing well. The Cricket Club intend to apply for funding for rabbit fencing, side screens and possibly another compost toilet. They would like the PC's support. It is felt the cricket club is a good asset for the village and the PC are very happy to support these applications. **Clerk** to liaise with the cricket club to produce a letter of support.

#### **5.7 Neighbourhood Plan**

No report received.

#### **5.8 Friends Of Reach Wood**

Nothing to report.

#### **5.9 A to B1102 Group**

There was significant activity prior to and as the new bus arrangements came into force with the group feeding back residents' concerns and wishes for the new Stephenson's services. It is OK currently although there is little clarity as to what happens when the current arrangements expire next year.

A-B1102 is currently trying to get a meeting with GCP ahead of the consultation closing to further put forward our ideas around how the services from East Cambs will be managed and the need for infrastructure to support the shift to bus use. I can let you have details of the outcome of the meeting and then the consultations response in due course.

#### **5.10 Reach Fair Group**

The Group provided the following report. Meeting Thursday 24 November 8pm Village Hall  
Present: Gayle Chapman, Alex de Giorgio-Miller, Cris Fletcher, Claire Halpin, Susan Hatley, and Dan Marsh (Dykes End). David Parr for Item 1. Apologies: Nev Fletcher and Oli Rausch

##### **1 Charitable Incorporated Organisation (CIO) Status**

David Parr introduced this item and went through the completed draft application form taking questions. AdG suggested that the accounts run from September to September, and then they will be in synchronisation with the organisation of the Fair and reflect each Fair.

ACTIONS: DP to circulate the completed form to everyone for final comments before its submission late Nov/early Dec. GC will look again at insurance cover and costs, so we have this information when the CIO is established.

##### **2 Public Liability Insurance**

It was agreed that the craft and charity stalls will be given advice about Public Liability Insurance. Currently the fun fair, food stalls, inflatable games and commercial stalls are required to have the appropriate insurance and certifications (Tests, Risk Assessments, Food Hygiene etc).

##### **3 Budget**

The draft budget was agreed.

Traffic Management will be provided by Doocey Traffic Management in accordance with a detailed specification. Three quotes to supply toilets were requested and Latta Loos, our previous and long-standing supplier, were the most competitive and therefore appointed.

Food Stalls. Seven food stalls are booked (plus ice vans, and a tea and coffee outlet).

Craft and Charity Stalls. Some craft stallholders have delayed booking, and there may be a shortfall in bookings due rising costs and the looming recession.

##### **4 Sponsorship**

There is very little history of companies sponsoring the Fair. In the past adverts have been placed in the programme, and raffle prizes have been donated to the Grand Draw.

Sponsors and could, for example, use the top of Burwell Road to promote themselves. Big trucks, flags etc. Following discussion, it was agreed that any sponsorship should be clearly agreed and well organised so that the sponsor feels acknowledged and well represented. The subject of sponsorship will be explored.

#### 5 AOB

The organisation of the Fair is on track with our external contacts (contributors, entertainers, suppliers, volunteers etc) all progressed. After Christmas we will begin to focus on the village logistics and contributions, advertising etc.

Date of next meeting Jan 19th, 2023, Thursdays 8pm Village Hall. Duration: usually c.1 hour

Future meetings: Feb 23rd ; March 23rd and April 20th.

PC discussion took place regarding the loan required to make payments prior to the Fair. The PC will require the official request to come from the CIO for approval at the February meeting. It was noted that as the CIO is still in the process of being set up the committee members are operating at their own risk as they are not operating as part of the PC.

#### 6. Disrepair of Little Fen Road

Little Fen Road is now in a near impassable state. Councillor Cane has been in discussions with CCC Highways, unfortunately there is not the budget to repair the Fen roads across all of Cambridgeshire, Norfolk, & Suffolk following years of under repair. The problem is a long running geological issue exasperated by the drought. Councillors at all three authorities are working together to lobby Central Government for additional funding.

**Councillor Cane** to write to Lucy Frazer stating the issues this is causing for Reach residents, businesses, and the Farming community. **Councillor Cane** will also respond to the local residents who have contacted the PC and her as District Councillor, encouraging local residents & businesses to sign letters of complaint/concern.

#### 7. Installation of solar panels on the village hall – pre-application

Amongst other changes to reduce costs the Village Hall committee would like to install solar panels. They would like the PC to help with this by submitting the pre-planning proposals & planning applications as the PC are able to get these for free & at a discounted rate. Approved. **Clerk** to liaise with the village hall committee.

#### 8. EDF solar farm distribution of funding

At the previous meeting it had been agreed that the two PCs would split the funding as 25% for Reach & 75% for Burwell. This was sent to each PC meeting for approval. Reach approved this however once at the December meeting Burwell announced they had changed their minds and wanted a 20%/80% split. This was disappointing to Reach & EDF. EDF would prefer if the two parishes could agree on a split. Following discussion to was agreed that **Councillor Acklam** should contact all parties stating that Reach would be willing to drop to a 22.5% share.

#### 9. Budget/Precept

Following discussion, the precept figure was increased by a less than inflationary 3%.

#### 10. January meeting date

Following discussion regarding councillors' availability the date was set for **WEDNESDAY 18<sup>th</sup> January**.

#### 11. Payments

S Bailey – stationary & postage	£107.78
E.on Next – power on the green	£37.33
N Acklam – Defibrillator parts	£47.94
N Acklam – 24Acres tree planting	£87.80
D McMillan – battery	£9.99

## **Draft Minutes of Reach Parish Council meeting Wed 18<sup>th</sup> January 2023**

<b>Attendance</b>	Charlotte Cane	Chair	Present
	David McMillan	Councillor	Present
	Cris Fletcher	Councillor	Not Present
	Matt Newman	Councillor	Present
	Susan Bailey	Clerk	Present
	Charlotte Cane	District Councillor	Present
	Joshua Schumann	County Councillor	Not Present

**Apologies for absence** - Received and approved.

### **Forum for members of the public.**

A member of the public attended to comment on the review of the draft NP development envelope decision and the review of past decisions discussion. The resident stated that she had complained to ECDC with regard to poor behaviour of Councillors but had withdrawn this complaint to allow the opportunity to discuss and resolve the matter. She also stated that she still expected a review of the decision made and all the concerns on a point-by-point basis, she would like to supply another supporting document for this process. Finally, the resident stated that she felt that if a review was approved the three Councillors, she had named in the complaint should not be part of any such review.

### **Declaration of Interests**

There were none.

#### **1. Decision as to whether a review of how past decisions were made is viable and if accepted adoption of policy document.**

Councillors Fletcher & Newman had produced a document attempting to develop a process on how it would be possible to review past decisions. There was concern as to the criteria on which decisions could be challenged, and that the PC may get stuck reviewing decisions over and over again if residents disagreed, this must be avoided. Further discussion took place regarding the time frame of such a process, who would be able to take part in the process and that there were already other avenues for redress of breaches of the Code of Conduct. The process would be made harder with such a small community. It was noted that other local PCs did not have review policies and even larger Councils, ECDC for example, do not have a direct process where members of the public can challenge decisions. **Councillor Newman** to edit the document to include comments from the discussion, the complaints process and legislation on predetermination. **Clerk** to add to the February agenda.

#### **2. Decision as to whether a review of the draft NP development envelope decision process should be undertaken.**

The complainant wanted a line-by-line review of the decision-making process relating to the proposed changes to the development envelope in the Draft NP. The complaint had been sent to the ECDC monitoring officer who deals with complaint regarding poor behaviour by Councillors, however the complaint had been dismissed as a complaint regarding the decision made, not the process, and the monitoring officer stated that Councillors are free to make their decisions as they see fit. Discussion took place as to whether there would be any point in this process if the complainant would not be satisfied, however it was felt it may be helpful for the community, to explain why the petition was dealt with in such a way and to give residents confidence in the PC. It was agreed that **Councillor Newman** would produce a short summary of the timeline, decisions made and how they were made, this would not be a point-by-point summary. **Clerk** to send documents to Councillor Newman and add to the March agenda.

A review of the actual decision itself will be carried out as part of the whole NP process.

#### **3. Planning – None**

#### **4. District Councillor Report**

In December, the Licensing Committee agreed to consult on the installation of CCTV in Taxis and Private Hire Vehicles, as set out by the Department for Transport. The consultation opened on December 19th and will end at 3pm on Monday 13th March 2023 - Licensing Policies | East Cambridgeshire District Council ([eastcambs.gov.uk](http://eastcambs.gov.uk)).

At the Special Council meeting on 15 December the Council approved its response to the GCP 'Making Connections' consultation. There was no motion on the agenda, so the motion and any amendments were put at the meeting, without any notice. Once the motion was moved, Charlotte moved an amendment:

Calling for the response to explicitly refer to the Council's declaration of a Climate Emergency and recognise the problems of congestion, including on the B1102 and A1303;

Welcoming the proposed improvements to bus services;

Calling for rail improvements and fare reductions and integration of various modes of public transport;

Calling for 'PlusBus' tickets – allowing travellers to pay a small supplement on their train fare to cover buses from home to train and from train to Cambridgeshire destination and back.

Calling for travel hubs along rural bus routes and key bus corridors (travel hubs would have secure cycle storage, car parking, well-lit and weatherproof bus shelters, security measures, e.g., CCTV, and real-time bus information); and  
Calling for 'school student tickets' ensuring that rural school students pay no more than Cambridge school students for travel to school or sixth form college.

The amendment was defeated by the administration. They went on to approve the submission even though it asked for a reduction to the proposed bus improvements, stating – "The Council is concerned that the proposed operating hours for both Key Bus Corridor services, Rural services and DRT services do not represent best use of public funds and are unsustainable."



As well as rejecting the proposed improvements to our bus services, the response also confirmed its rejection of congestion charging, stating – “At its Full Council meeting in April 2022 East Cambridgeshire District Council agreed a motion opposing congestion charging in Greater Cambridge and upholds that decision.”

The Council can no longer collect waste containing Persistent Organic Pollutants (known as POPs). POPs are found in waste upholstered domestic seating (WUDS) textiles and foams treated with fire retardants, such as sofas, chairs, cushions, or beanbags. This is because the County Council will not accept them, as it cannot dispose of them now that they are banned from putting them in landfill – which is currently how Cambridge County Council dispose of all waste that cannot be recycled. The short notice for this change is because the Environment Agency only informed Councils on 19th December that it would be enforcing this law from 1 January 2023. The County Council is urgently looking for incinerators which will take this waste. The Council is asking residents to take advantage of re-use schemes or trade-in initiatives used by retailers or hold onto such items until they can provide an update.

We are getting reports that street cleansing is falling below expectations. It was also reported to Operational Services Committee that ECSS had understandably been prioritising bin collections over street cleaning, due to the recent problems. Rather than us just asking generally for street cleaning to be improved it would be helpful if Parishes could let us know which streets are your priorities.

## **5. County Councillor Report - supplied by Councillor Cane.**

Full Council meeting 13 December

Of the five motions for debate listed in last month’s report, one was withdrawn, two were passed, and two were defeated. The two motions passed were:

- A Lib Dem motion calling for managed divestment by the Cambridgeshire Local Government Pension Scheme from fossil fuels, and a timeline to reduce carbon emissions with an aim of reaching net carbon zero earlier than the Paris Accord.
- A Labour motion committing to the development of a local, county-wide ‘Place of Safety’ pledge, which supports the right of all to seek services, advice, support and representation without fear of adverse consequences; establishing a councillor ‘migrant champion’ role; and asking the Chief Executive to write to the Home Secretary to highlight the challenges faced by asylum seekers and refugees in Cambridgeshire and to call for safe and legal routes for asylum and adequate funding for local authorities to support resettled communities in Cambridgeshire.

### Staffing

The full council meeting appointed a new Service Director Legal and Governance (Emma Duncan) and a new Executive Director of Finance and Resources (Michael Hudson). Frank Jordan will also join Cambridgeshire County Council in the spring as the Council’s new Executive Director of Place and Sustainability.

### STRATEGY & RESOURCES Government settlement.

Just before Christmas the Government issued its ‘provisional local government finance settlement’—the annual indication to councils of the money they will have available for local services next year. The Government proposes that Cambridgeshire County Council’s ‘core spending power’ (the overall revenue funding available for council services) should increase by 9.5 per cent. Unfortunately, however ...

- That is less than the current rate of inflation, so overall it will buy less.
- Half of the 9.5 per cent is from the council’s power to raise council tax—in other words, the Government expects local taxpayers to shoulder a lot of the extra costs.
- Some of the remainder replaces lost business rates income.

### ADULTS & HEALTH Director of Public Health annual report

The annual report of Cambridgeshire’s Director of Public Health to the Adults & Health Committee in December argued strongly in favour of universal, rather than targeted, approaches to health inequalities. She observed that targeted public health interventions risked missing the majority of people needing these services. Her conclusions and recommendations were as follows.

The renewed interest and commitment to tackling health inequalities as a result of the pandemic, is very much welcomed. Historic approaches at tackling these inequalities have not been successful, in fact inequalities have widened. The automatic response to tackling inequalities is to target, however, as demonstrated in this report, universal approaches can be far more effective at reducing inequalities, than targeted approaches.

Universal approaches are also necessary in identifying those individuals who need further intervention. Targeting has also often been carried out on geographical basis or using IMD [Index of Multiple Deprivation] quintiles, as argued in this report, this can often lead to the majority of individuals in need, being missed.

To be fair to our residents we need to successfully reduce inequalities in health outcomes. To be successful in this we must be more intelligence led and evidence based.

We need to:

- Keep a focus on universal interventions as a keyway of improving outcomes, reducing inequalities in health in our population.
- Make sure that any universal offer is systematically planned and delivered to enable access to all and give additional support according to need.
- Start early (pregnancy and childhood) before inequalities become entrenched.

- Ensure that any targeted intervention is → based on need, ideally through universal identification of need or risk rather than grouping by easily available information such demographics or geography → evidence led as to approach.
- Be transparent and explicit around considerations for interventions clearly articulating the proposed individual and population benefits, draw first on evidence-based approaches with proven cost effectiveness and where evidence is not available, research and evaluate the impact of new and innovative approaches.

#### COMMUNITIES, SOCIAL MOBILITY & INCLUSION (COSMIC) Births, deaths, and marriages

A report to the COSMIC Committee in December on the Council's registration services included the following information about the numbers of births, deaths, marriages, civil partnership ceremonies, and new British citizens in Cambridgeshire in the last two years.

Births registered 2021/22 - 7,760. 2020/21 - 7,135

Deaths registered 2021/22 - 5,779. 2020/21 - 6,115

Notices of marriage / civil partnership 2021/22 - 5,417. 2020/21 - 2,737

Marriage / civil partnership ceremonies 2021/22 - 1,925. 2020/21 - 608

New British citizens 2021/22 - 2,322. 2020/21 - 874

Both years' figures were affected by the pandemic.

#### Mobile library service review

A review of the Council's mobile library service took place last year, resulting in a number of improvements. Twenty-one additional stops were added, and routes were rearranged, enabled by storing vehicles within communities, rather than centrally.

- Mobile libraries are now available to the public nearly 20 per cent longer, due to reduced driving between stops.
- Travel has been reduced, with over 150 fewer miles travelled a month and so less fuel used.
- The service visited several events around the County, such as Thriplow Daffodil weekend, Ely and Cambridge Prides, fetes in Sutton, numerous outdoor The Library Presents events, Our Place in Space, and many more summer fetes by local staff using the new book bikes.
- 300 new members joined between May and September; and there were 6,296 visits to the vehicles and over 20,000 items issued—a stronger recovery than many of the service's static libraries to pre-pandemic levels.
- Bessie the book bike and Jessie the Jubilee bike attended twelve events to raise awareness for the service, including a royal reception at Cambridgeshire Day.

#### ENVIRONMENT & GREEN INVESTMENT POPs in WUDS

Persistent Organic Pollutants (POPs) are found in various Waste Upholstered Domestic Seating (WUDS) such as sofas and upholstered dining chairs. Such materials should not be landfilled.

The law against landfilling of POPs was introduced in 2007, but the Environment Agency recently announced it would become more rigorous in its enforcement. The Environment Agency announced in August 2022 that it would soon expect councils to cease landfilling upholstered seating, and instead to incinerate it. It published its Final Regulatory Position Statements on this matter on Monday 19 December 2022, with implementation starting on Sunday 1 January 2023.

The short notice over Christmas has provided little time to organise incineration capacity, and the Council is therefore seeking an extension of at least a month while it works through options and liaises with its waste contractor Thalia (formerly Amey) and with the district councils who collect Cambridgeshire's waste. This does however mean that from 1 January the Council will not be able to dispose of soft furnishings until a method of disposal acceptable to the Environment Agency has been identified and put in place.

#### Sunnica solar farm application

The Planning Inspectorate conducted a number of meetings in December as part of its consideration of the Sunnica application for the country's largest solar farm, spanning East Cambridgeshire and West Suffolk.

The Chair of the Environment & Green Investment Committee addressed one of the Open Floor meetings, in Newmarket on Tuesday 6 December. Her comments covered food security and soil quality, biodiversity, transport, and public rights of way, as well as the concerns the County Council raised in July 2021 with the Secretary of State regarding the size and scale of the proposal, the effect of Covid restrictions then in force on opportunities for public engagement, the exclusion of some residents from the initial round of consultations, and the impact of the proposals on rural communities.

#### Swaffham Prior energy scheme in the spotlight

The flagship renewable energy scheme at Swaffham Prior, initiated by residents and supported by the Council, was covered by BBC Radio 4 in its Money Box programme between Christmas and New Year.

#### HIGHWAYS & TRANSPORT 20MPH schemes

The Highways & Transport Committee approved the changes to the Council's policy on 20MPH speed limits outlined in last month's report. The proposed timetable for applications for funding for new 20MPH speed limits is as follows.

- Go 'live' with application process on-line for new schemes (February 2023)
- Application period (February to April 2023)
- Prioritisation (May to June 2023)
- Committee report for approval (July 2023)
- Programming and delivery of schemes (August 2023 onwards)

#### Local Highway Improvement scheme updates Making Connections consultation

The Greater Cambridge Partnership Making Connections 2022 consultation closed on Friday 23 December. Around 23,000 responses have been received, and the Greater Cambridge Partnership expects to publish a final report on the consultation outcomes and next steps, for consideration by its Board in June 2023.

The consultation is about proposals for public transport improvements, and better cycling and walking options, as well as about the element which has been most talked about—a congestion charge.

Any decision on a charge for driving on roads in Cambridge—or anywhere else in the county—would be a matter for Cambridgeshire County Council.

#### Safe and Dry

The Council has used a data interpretation and modelling tool to process information about local flood locations. As a result, it has identified a 'Safe and Dry' programme of 115 locations where work is needed to improve flood resilience, and work has begun on the first 50 of these locations. The remaining locations will be kept on a 'long list' for future works, which will be added to on an ongoing basis.

The Council is also in the process of delivering a two-year programme of works to clean and plot all gullies and surface drainage features countywide using the Kaarbontech Asset Management System.

#### A10 grip cutting

The County Council is planning to cut 'grips' along the A10 from the Wisbech Road roundabout at Littleport to the Cambridge Road roundabout at Angel Drove Ely. This work is planned between Monday 13 and Friday 24 February, and is intended to improve surface water drainage along the

A10 as part of the Council's ongoing improvements to highways drainage. The road will remain open, but with a 40MPH limit in place from 09.30 to 15.30.

A10 / A142 BP roundabout The BP Roundabout NMU [Non-Motorised Users] Project Board met on Wednesday 7 December to consider the next stages of work to deliver a safe crossing of the A10 at the BP roundabout.

A comprehensive brief has been prepared for an option assessment and feasibility study. Consultants are lined up to undertake this work, subject to final approval of the brief, and funding, and consultancy work is expected to begin this month. Combined Authority 'gainshare' funding has been identified for this stage of work. The County Council and Combined Authority continue to explore options for capital funding for construction.

#### King Charles III coronation street parties

The Council has published guidance for local groups seeking to organise street parties and highways events to mark the coronation of King Charles III in May 2023. All street party applications must be received by the County Council at least eight weeks in advance (Friday 10 March 2023) via the Council's website. Highway Events applications must be submitted at least twelve weeks in advance (Friday 10 February 2023). More information about the process can be found at <https://www.cambridgeshire.gov.uk/residents/travel-roads-and-parking/roadsand-pathways/highway-events/coronation-events>

#### Meanwhile on the Combined Authority

Buses continue to be a hot topic across Cambridgeshire. The Combined Authority is the transport authority responsible for passenger transport across our area, working within a legislative framework and a deregulated bus system. The following is a summary of the various bus workstreams currently being undertaken by the Combined Authority.

The Combined Authority Board agreed a draft Bus Strategy on 30 November—consultation is planned to start in the week beginning Monday 9 January for six weeks. The Strategy will then go to the Combined Authority's Transport & Infrastructure Committee and the Board in March. The Strategy will form part of the suite of documents associated with the Combined Authority's emerging Local Transport & Connectivity Plan (LTCP). The Government is expected to issue national LT(C)P guidance for local transport authorities early this year, and Cambridgeshire & Peterborough's draft LTCP will be assessed against that guidance before being presented to the Board.

Cambridgeshire & Peterborough was one of a majority of local transport authorities to be given no funding by Government for its Bus Service Improvement Plan. This funding is intended to support new approaches to bus provision, not directly subsidise bus routes. The Combined Authority is working with partners to prepare a revised Plan reflecting the priorities of the emerging LTCP and the draft Bus Strategy. This will be presented to the Transport & Infrastructure Committee and the Board in May / June.

Bus franchising is the Mayor's preferred solution for bus services in Cambridgeshire & Peterborough. Under this model the local transport authority takes control of the public transport network, specifying and contracting bus services, as opposed to the deregulated free-for-all in place since 1986. Work is ongoing to refresh the outline business case for franchising. This will explore all potential funding options and assess the benefits of franchising against the current system. The business case will also review other issues including geography, contracting, depots, vehicles, and branding. This work will continue in parallel with the Bus Strategy and Bus Service Improvement Plan work above. Engagement with operators and other stakeholders will be vital if franchising is to progress to the next stage following the outline business case work. It will also be essential to identify reliable ongoing revenue funding. The majority of bus services in Cambridgeshire & Peterborough are run commercially by private operators, and the Combined Authority has no control over these. The Combined Authority currently subsidises 73 services across its area. Full support for eighteen services and partial support for a further five began in October 2022 after Stagecoach withdrew from these services. There is an option to extend the contracts for these by one year from the end of March, and final decisions on these will be taken in February or March following the setting of the Combined



Authority's budget and taking account of the draft Bus Strategy. Contracts for a further six of the 73 services expire at the end of March 2023 and a procurement process has begun to retender these. The Combined Authority will set its budget for 2023/24, including bus support, at its Board meeting on 25 January.

The Transport & Infrastructure Committee will consider a Bus Assessment Framework in January. This will draw on the emerging LTCP and Bus Strategy and be used to inform decision-making on bus subsidies in future.

The GCP Making Connections proposals include an enhanced bus network and mechanisms for both upfront investment and ongoing subsidy. The Combined Authority will need to consider the effect of this on its own work. The GCP would develop any necessary outline business case, and any decision on road charging would rest with the County Council. In an initiative with Stagecoach and the Greater Cambridge Partnership, the Combined Authority secured Government funding for thirty zero emission buses for Cambridge. These are expected to be available from March.

The Combined Authority Board agreed on 30 November to extend the contract for the TING Demand Responsive Transport service in Huntingdonshire for a further year. The Combined Authority is also exploring the case for further Demand Responsive Transport services elsewhere. The Combined Authority is also working with bus operators to understand the scale and effect of driver shortages and how it can provide support through its skills programmes.

## **6. Minutes of previous Meeting - to be approved as correct.**

Approved. Matters arising – Councillor Cane had written to CCC Highways regarding Little Fen Drove. The response stated that the road is on the list for a temporary repair. Following discussion, it was agreed that a letter should be sent to Lucy Frazer to highlight the issue and ask what the Government is going to do about the funding required for the Fen roads, **Councillor Cane & Clerk** to organise.

The Village Hall committee had asked **The Clerk** to chase up the preplanning application for solar panels.

## **7. Adoption of the ECDC members code of conduct**

ECDC publish a code of conduct for members of Councils, it was agreed that Reach PC should adopt this code to align the council procedure to ECDC & surrounding PCs.

## **8 Adoption of complaints procedure policy**

A complaints procedure document had been produced. The PC agreed to adopt this procedure.

### **9.1 Reach Grant Fund**

Nothing to report.

### **9.2 Finance**

Nothing to report.

### **9.3 Parish Council Members**

Councillor Newman asked about the old bin and concrete base at the entrance to the playing field, **Clerk to** ask for these to be removed.

Councillor McMillan stated that he had not received any information or parts back from Kompan for the puzzle game at the park. **Clerk to** chase.

The Council also ask whether the streetlight maintenance had been confirmed. **Clerk to** chase up and confirm.

### **9.4 Play Spaces**

Nothing to report.

### **9.5 Rights of Way**

Nothing to report.

### **9.6 24Acres Committee**

Nothing to report.

### **9.7 Neighbourhood Plan**

Nothing to report.

### **9.8 Friends Of Reach Wood**

Nothing to report.

### **9.9 A to B1102 Group**

A-B1102 had held a meeting and identified two likely areas of work for the group.

- lobbying for extension to existing bus services once the current funding expires on 31/03/22. Without knowing whether more money will be available it is difficult to know whether the group will need to be active on this.

- Seek to get on the front foot regarding the bus service along the B1102 and seek to become a pilot for the new bus provision.

It was noted that ECDC have not been supportive of the proposals outlined in the Making Connections consultation. Given that East Cambs is not part of the GCP it was thought sensible to get on the front foot and seek to position the B1102 as a pilot for the Making Connections approach with the PC's along the route giving a united front to the GCP/County Council. A proposal has been developed. From the Reach perspective, it is likely we will have an infrequent service through the village and will be expected to join the services at either Burwell or Swaffham Prior and so there is need to consider how to ensure good connection to SP or Burwell. Given the other services available at Burwell it would seem sensible to make this the preferred option for accessing the more regular bus services.

B1102 Group have provisionally booked Mandeville Hall for 2nd Feb to present the ideas, consult and seek support which will include some financial support. **Councillors Newman & Cane** to try to attend.

#### 9.10 Reach Fair Group

No report received.

#### 10. Resignation of Councillor Acklam – distribution of his workload, & acceptance of him continuing as tree warden & PC representative on the Swaffham Prior Parochial Charity.

Councillor Cane thanked Nick Acklam for the phenomenal amount of work he had undertaken as a Councillor, and that his resignation was a significant loss for the village.

The Council gratefully accepted his offer to continue as tree warden and the Reach PC representative on the Swaffham Prior Parochial Charity.

#### 11. New Playspaces officer

Alex de Giorgio-Miller has had to give up her role as playspaces office. Councillor Cane thanked her for her time and efforts. **Councillor McMillan** agreed to be the new Playspaces officer.

#### 12. Thermal Imaging Camera Loan Scheme

ECDC have recently launched Thermal Imaging Camera Loan Scheme which actively encourages Parish Councils and other Community Groups to come forward and borrow up to three cameras at a time. The cameras are then used to survey homes in that local area (where the homeowner has asked for a survey), to see if their property is leaking heat. The camera looks and operates similarly to a normal digital camera, or the camera on your smartphone. However, rather than a normal camera image, you will see a range of colours from dark blue to bright reds and yellows. Darker colours indicate cold spots, whilst the brighter reds, oranges and yellows show warm spots. So, if you are inside a home, the darker colours are highlighting where heat is being lost to the outside. If you are outside your home, the brighter colours are showing you where heat is being lost from your home.

The PC are enthusiastic about this scheme and agree to move ahead with booking a loan. **Councillor Newman** will lead this project, **Clerk** to send an email to the village and collate interested residents. The scheme will also be advertised in the village magazine and on Facebook.

#### 13. New Councillor recruitment & May elections

An election for the Parish Council will take place on 4<sup>th</sup> May 2023. The present PC would like to encourage new members to come forward for the election. It is essential that the PC is filled with new Councillors from the village as it supports so many organisations within the village. If the village is unable to generate a new Council, ECDC will 'helicopter in' Councillors from other areas to the PC to keep it running. **Councillor Cane** to produce an article for the village magazine.

#### 14. Payments

E. on - Power on the green	£56.14
S Bailey – Clerk Salary	Confidential
I Poole – NP support	£1011.84

The date of the **next Parish Council meeting** will be held **on Tuesday 7<sup>th</sup> February 2023 at 7.00pm.**

The agenda for this meeting will be issued by the previous Tuesday and can be accessed from the Parish Council area of the Reach website ([www.reach-village.co.uk](http://www.reach-village.co.uk)).

## Diary Dates

February 2023	Event	Location	Time
Every Friday	Community Cafe	Village Hall	3pm to 4.30pm
Tuesday 7	Parish Council Meeting	Village Hall	7.00pm
Tuesday 7	Recycling Day (Brown/Green)		
Tuesday 14	Recycling Day (Blue)		
Tuesday 21	Recycling Day (Brown/Green)		
Tuesday 28	Recycling Day (Blue)		

March 2023	Event	Location	Time
Every Friday	Community Cafe	Village Hall	3pm to 4.30pm
Tuesday 7	Parish Council Meeting	Village Hall	7.00pm
Tuesday 7	Recycling Day (Brown/Green)		
Tuesday 14	Recycling Day (Blue)		
Tuesday 21	Recycling Day (Brown/Green)		
Tuesday 28	Recycling Day (Blue)		



# Rowan's charity art exhibition

**'TOGETHER'** 18-19 February, 10am-3pm

*The Leys School, Cambridge, CB2 7AD*

Exhibition | Pop-up shop | Silent auction | Free entry

*All funds raised will support adults with learning disabilities*

fundraising@rowanhumberstone.co.uk or call **01223 566027**

www.rowanhumberstone.co.uk Registered Charity No. 1099555



## Bus Timetable



11

Newmarket - Burwell - Reach - Swaffham Prior - Lode - Cambridge

### Monday - Saturday

No service Sunday & public holidays

Commencing 31st Oct 2022

	NS	Sa	Sa	NS										
Newmarket, The Guineas Bus Station	--	--	700	700	820	920	1020	1120	1220	1320	1420	1520	1620	1745
Newmarket, Studlands, Park Avenue	--	--	710	710	830	930	1030	1130	1230	1330	1430	1530	1630	1755
Burwell, Ness Road	639	649	--	--	--	--	--	--	--	--	--	--	--	--
Burwell, Hawthorn Way	641	651	723	723	843	943	1043	1143	1243	1343	1443	1543	1643	1808
Reach, Post Office	653	703	--	--	855	--	1055	--	1255	--	1455	1555	1655	1820
Swaffham Prior, Bus Shelter	658	708	737	737	900	957	1100	1157	1300	1357	1500	1600	1700	1825
Lode, Church	--	--	--	--	--	1004	--	1204	--	1404	--	--	--	--
Stow cum Quy, Station Rd Bus Stop	708	718	747	751	910	1012	1110	1212	1310	1412	1510	1610	1710	1835
Cambridge, Marshalls Airport	718	728	757	804	920	1022	1120	1222	1320	1422	1520	1620	1720	1845
Cambridge, Drummer St Bus Station	732	742	811	816	934	1034	1134	1234	1334	1434	1534	1634	1734	1859
Cambridge, Drummer St Bus Station	650	750	850	950	1050	1150	1250	1350	1450	1550	1715	1815	1915	
Cambridge, Marshalls Airport	702	802	902	1002	1102	1202	1302	1402	1502	1602	1727	1827	1927	
Stow cum Quy, Station Rd Bus Stop	712	812	912	1012	1112	1212	1312	1412	1512	1612	1737	1837	1937	
Lode, Church	--	--	920	--	1120	--	1320	--	1520	--	1745	--	--	
Swaffham Prior, Bus Shelter	723	823	926	1023	1126	1223	1326	1423	1526	1623	1751	1848	1948	
Reach, Post Office	728	828	--	1028	--	1228	--	1428	--	1628	--	1853	1953	
Burwell, Hawthorn Way	738	838	938	1038	1138	1238	1338	1438	1538	1638	1803	1903	2003	
Newmarket, Studlands, Park Avenue	752	852	952	1052	1152	1252	1352	1452	1552	1652	1817	1917	2017	
Newmarket, The Guineas Bus Station	802	902	1002	1102	1202	1302	1402	1502	1602	1702	1827	1927	2027	
NS	Not Saturdays													
Sa	Saturdays Only													

---

## Then and Now *(see facing page for pictures)*

---

Tradesmen enjoying a tea break during repair works on the church after it had been struck by lightning in September 1958. Refurbishments underway 64 years later. Not part of the same contract I assume!

**Chris Patterson**

---

## Contact Information

---

<b>Parish Council – see “Know Your Parish Council”</b>		
<b>Village Hall</b>		
Chair	David Thomas	01638 742676
Finance	Andrew Trump	01638 743335
Bookings	Tash Bridgeman	07920 516586 rvhcb25@gmail.com
Secretary	Sue Elliot	01638 742268
<b>Marquee Bookings</b>	Claire Halpin-McDonald	01638 743330
<b>Church</b>		
Vicar	Eleanor Williams	01638 741262
Curate (Duty days Wed, Fri and Sun)	Reverend Paula Spalding	07545 868549
Priest in Retirement	Reverend David King	01638 742924
Churchwarden	Dr Stephen Martin	01638 611235
<b>Emergencies</b>		
Electricity (Eastern Electric)		0800 783 8838
Police (Emergency)		999
Police (Non-Emergency)		101
Water (Anglian Water)		08457 145145
<b>Doctors, Burwell</b>		
Contact Phone Numbers		01638 741234, out of hours dial 111
Surgery Hours		Mon to Friday, 8.30am to 6.00pm
Website		<a href="https://www.theburwellsurgery.co.uk/index.aspx">https://www.theburwellsurgery.co.uk/index.aspx</a>